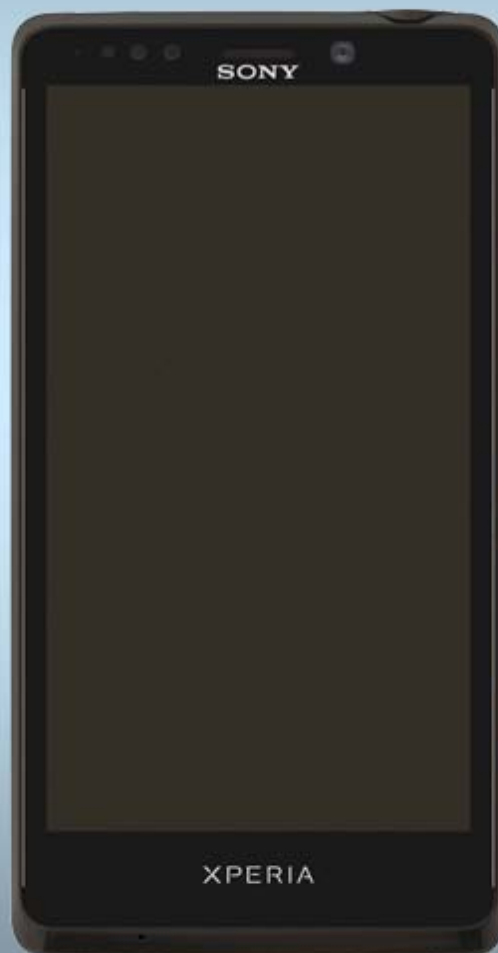


# Working Instructions

## - mechanical -



**Xperia™ T**  
**LT30p, LT30a & LT30at**

## CONTENTS

<b>1</b>	<b>Exterior Views.....</b>	<b>4</b>
1.1	LT30p .....	4
<b>Exterior Views .....</b>		<b>5</b>
1.2	LT30a & LT30at.....	5
<b>2</b>	<b>Tools .....</b>	<b>6</b>
<b>3</b>	<b>Disassembly.....</b>	<b>7</b>
3.1	Cover Back Assembly.....	7
3.2	Carrier Lower Frame Assembly .....	11
3.3	Carrier Upper Frame Assembly.....	11
3.4	PBA Complete .....	12
3.5	PBA SideKey FPC & Front Cover.....	14
<b>4</b>	<b>Replacement .....</b>	<b>15</b>
4.1	Cover Back Assembly.....	15
4.2	Carrier Lower Frame Assembly .....	15
4.3	Carrier Upper Frame Assembly.....	15
4.4	BPA Complete .....	16
4.5	PBA SideKey FPC & Front Cover.....	16
4.6	Ant. NFC.....	17
4.7	Battery & Battery Adhesive .....	19
4.8	Cable Coax .....	21
4.9	Camera 13.1 MPixel CMOS .....	22
4.10	Cap Lower Cap Assembly .....	23
4.11	Cap Upper Cap Assembly.....	23
4.12	Carrier Label Tray .....	24
4.13	Carrier Label Tray Holder Assembly.....	25
4.14	Cover Camera Ring Assembly .....	26
4.15	Cover SIM/SD Door Assembly.....	26
4.16	Cushion Earspeaker.....	28
4.17	Cushion Flash lens .....	29
4.18	Ear Speaker .....	30
4.19	Ear Speaker Gasket.....	31
4.20	Gasket Audio Jack Grommet .....	32
4.21	Gasket Camera Grommet .....	33
4.22	Gasket Lower Cap Sealing .....	34
4.23	Gasket Mic 2 Grommet .....	35
4.24	Gasket Proxy Grommet PBA Assembly .....	36
4.25	Gasket USB Grommet.....	37
4.26	Key Multifunc Assembly .....	38
4.27	PBA AVP FPC .....	40

4.28	PBA Lower FPC .....	41
4.29	Side Key FPC tape .....	43
4.30	Side Key FPC ZIF tape .....	44
4.31	Water Indicator .....	45
4.32	Window Camera Flash Inner Lens .....	45
4.33	Board Swap - Replacement .....	46
4.34	Board Swap – Change Label .....	47
4.35	Board Swap – Customize of Software .....	48
5	Re-Assembly .....	49
5.1	PBA SideKey FPC & Front Cover .....	50
5.2	BPA Complete .....	52
5.3	Carrier Upper Frame Assembly .....	54
5.4	Carrier Lower Frame Assembly .....	55
5.5	Connect Battery .....	56
5.6	Cover Back Assembly .....	57
6	Revision History .....	60

*For general information about mechanical repair related issues, refer to  
1220-1333: Generic Repair Manual - mechanical*

# 1 Exterior Views

## 1.1 LT30p



## Exterior Views

### 1.2 LT30a & LT30at



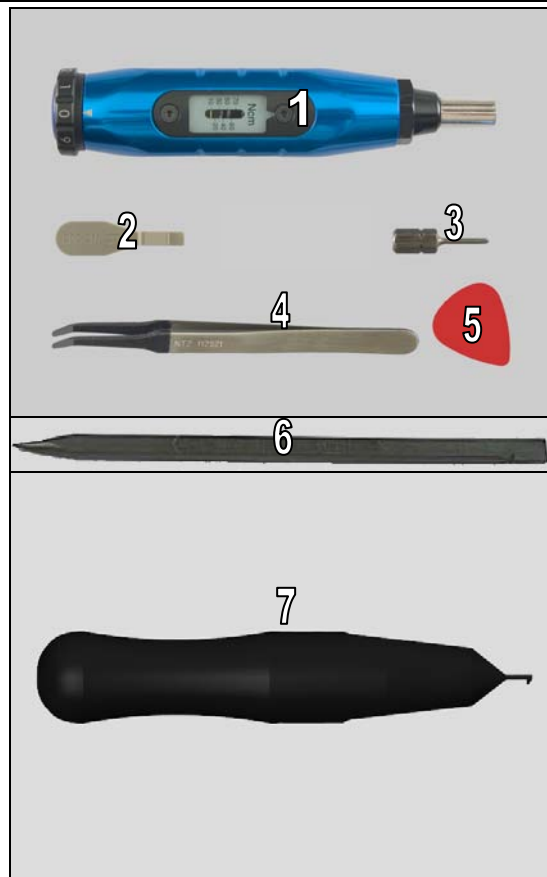
## 2 Tools

### SPECIAL TOOLS

1. Torque Screwdriver
2. Front Opening Tool
3. Bits (JCIS No 0)
4. Flex Film Assembly Tool
5. Guitar Pick

6. Nylon pointer

7. Battery Connector Removal Tool



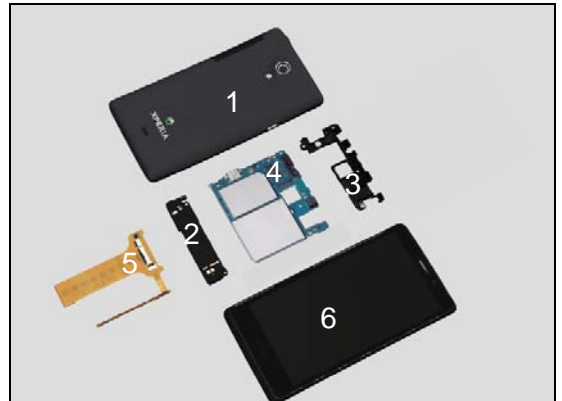
**For part not on the tools above, refer to the 'Tools Catalogue/Matrix'!**

## 3 Disassembly

### LT30p

The Disassembly is done to the following modules:

1. Cover Back Assembly
2. Carrier Lower Frame Assembly
3. Carrier Upper Frame Assembly
4. PBA Complete
5. PBA SideKey FPC
6. Front Cover



### LT30a & LT30at

The Disassembly is done to the following modules:

1. Cover Back Assembly
2. Carrier Lower Frame Assembly
3. Carrier Upper Frame Assembly
4. PBA Complete
5. PBA SideKey FPC
6. Front Cover
7. Cap Lower Cap Assembly
8. Cap Upper Cap Assembly

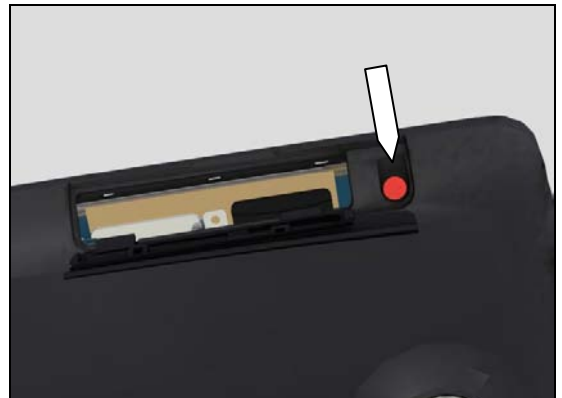


## 3.1 Cover Back Assembly

### LT30p

Open the SIM/memory card hatch and remove the screw M1.4X4.0 by using a screwdriver with Bits (JCIS No 0).

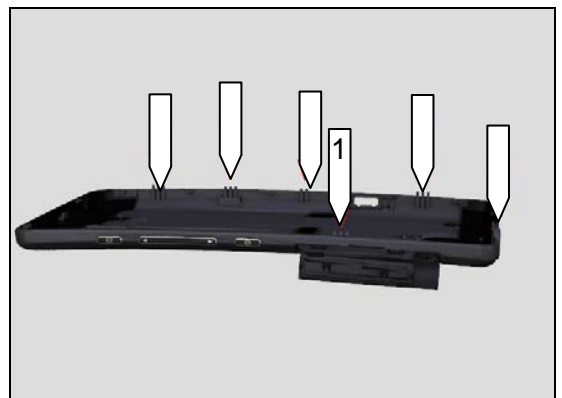
**Scrap! Not to be reused!**



Insert a Guitar Pick as shown in picture below and gently loosen all the hooks marked on the picture.

Gently break open the Cover Back Assembly and use the Guitar pick to un-hatch the snaps. Start with hatch marked with '1' and do it in chronologic order

**Enlarge picture to see hooks more clearly!**



## Disassembly

***It is important that you start at the SIM-hatch.***



### LT30a & LT30at

#### Cap Upper Cap Assembly

Gently insert a Guitar pick into the Cap Upper Cap Assembly and un-hatch the snaps. When the hole side is loosened, 'break open' it to free it



When the hole side is loosened, 'break open' it to free it



#### Cap Lower Cap Assembly

Do the same thing for the Cap Lower Cap Assembly.





## Disassembly

Loosen the 2 screws at the top with Bits (JCIS No 0).

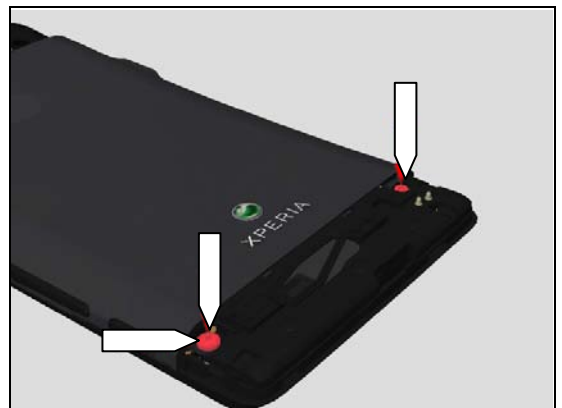
**Scrap! Not to be reused!**



Loosen the 2 screws at the bottom with Bits (JCIS No 0).

**Scrap! Not to be reused!**

**Be aware of the MComp Screw Bushing under the bottom left screw!**



Gently insert the Guitar pick at the Cover SIM/SD Door



## Disassembly

Assembly side and separate that side first to remove the Cover Back Assembly.

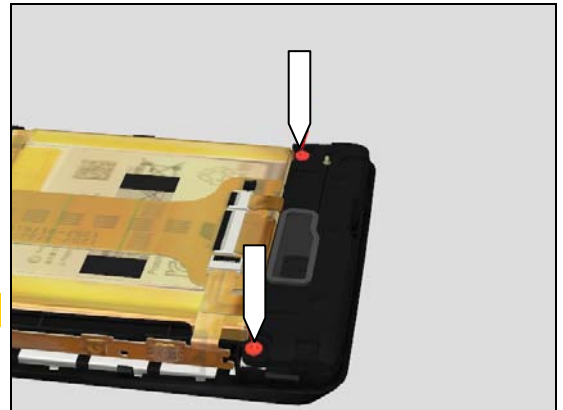


## Disassembly

### 3.2 Carrier Lower Frame Assembly

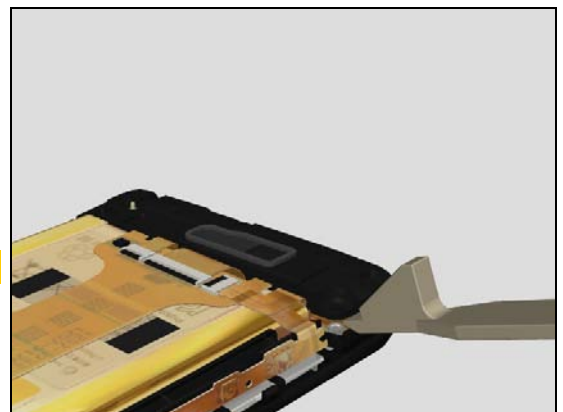
Remove the two screws M1.4X3.0 by using a screwdriver with Bits (JCIS No 0).

**Scrap! Not to be reused!**



Remove the Carrier Lower Frame Assembly with a Front Opening tool by insert it in the same place as the left hand screw.

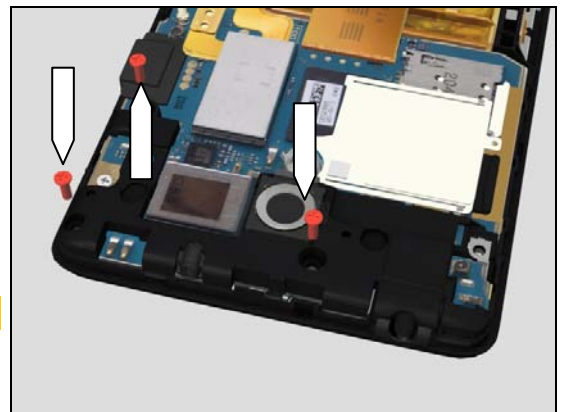
**Be careful not to damage the springs!**



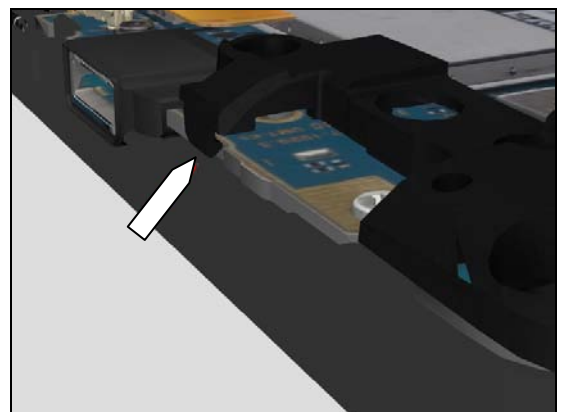
### 3.3 Carrier Upper Frame Assembly

Remove the three screws M1.4X4.0 by using a screwdriver with Bits (JCIS No 0).

**Scrap! Not to be reused!**



Gently remove the snap with a Front Opening Tool and remove the Carrier Upper Frame Assembly.

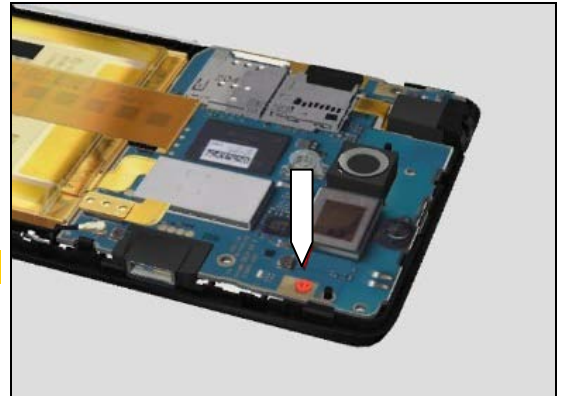


## Disassembly

### 3.4 PBA Complete

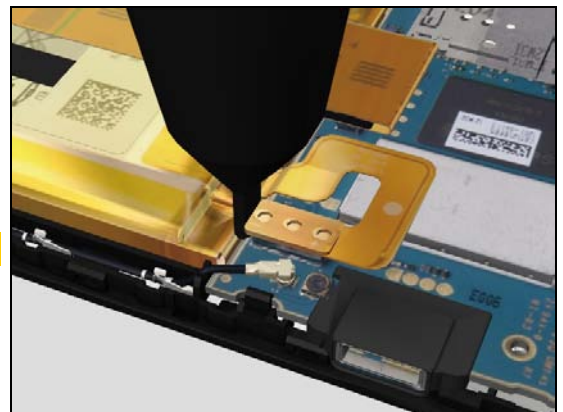
Remove the screw M1.4X3.0 by using a screwdriver with Bits (JCIS No 0).

**Scrap! Not to be reused!**

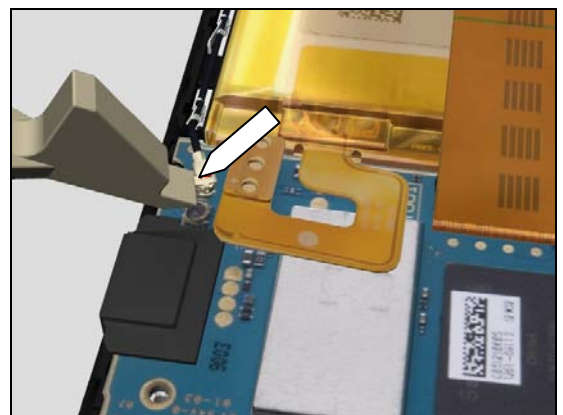


Remove the Battery BtB connector with the Battery Connector Removal Tool.

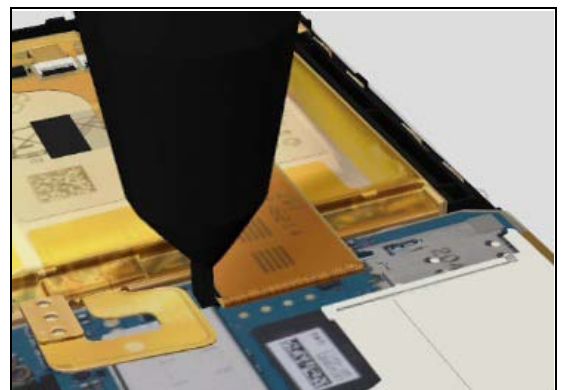
**Do not damage the components on the Main PBA!**



Remove the Cable Coax with a Front Opening Tool.



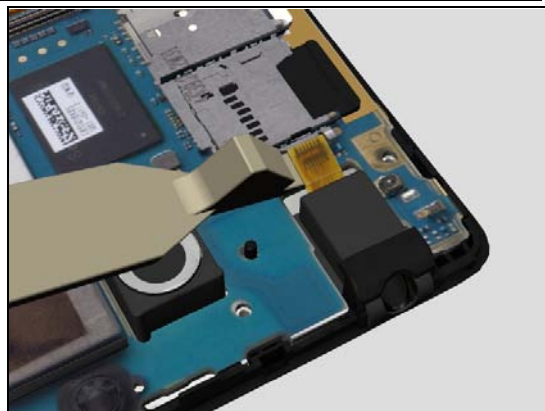
Remove the PBA SideKey FPC with the Battery Connector Removal Tool.



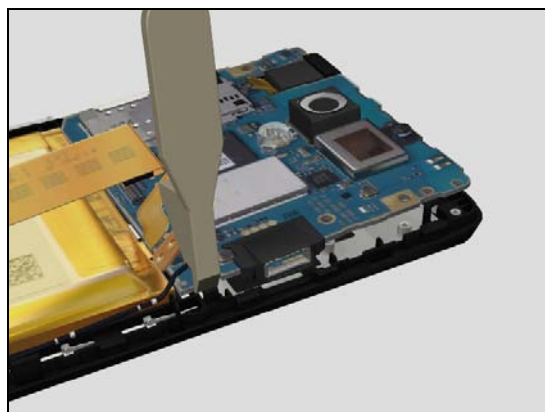
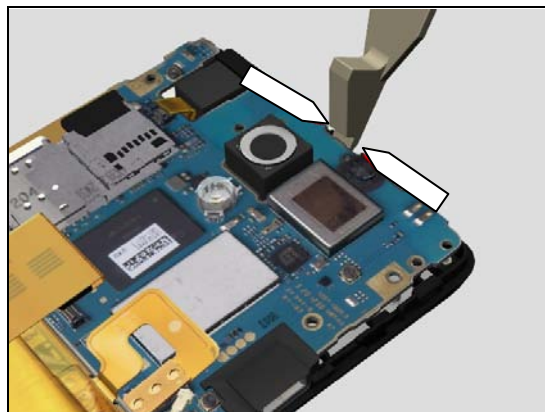
## Disassembly

Remove the PBA AVP FPC with the Front Opening Tool.

**Do not touch the Camera!**



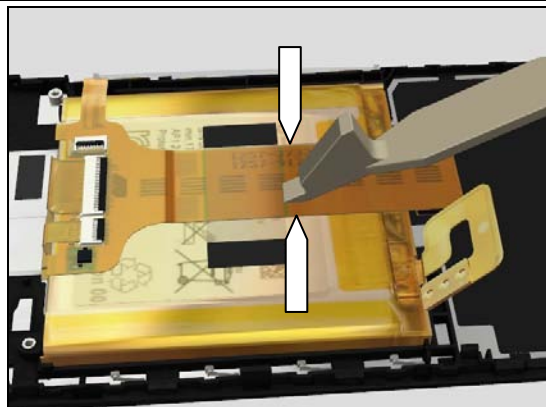
Remove the PBA Complete with the Front Opening Tool by un-hatching the two snaps.



## Disassembly

### 3.5 PBA SideKey FPC & Front Cover

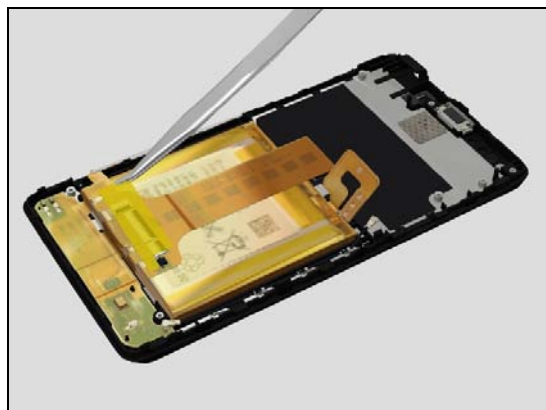
Use a Front Opening Tool to gently lift the Key FPC Tape so it is possible to remove without damaging the Battery.



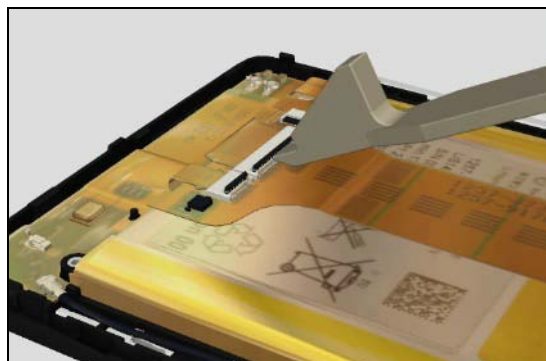
Gently remove the Key FPC ZIF tape by using a Flex Film Assembly Tool.

**Scrap! Not to be reused!**

**Be careful not to damage the flexes!**

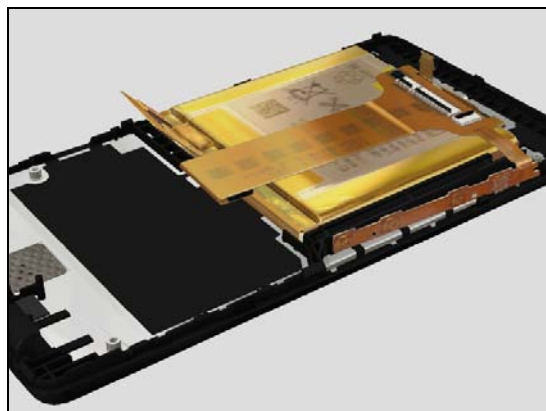


Unlock and disconnect the three ZIF connectors by using a Front Opening Tool.



Peel of the PBA SideKey FPC.

**Scrap! Not to be reused!**





## 4 Replacement

### 4.1 Cover Back Assembly

#### LT30p

Follow the 3.1 Disassembly instructions section 'LT30p'!

Prepare a new Cover Back Assembly.

Follow the 5.6 Reassembly instructions section 'LT30p'!



#### LT30a & LT30at

Follow the 3.1 Disassembly instructions section 'LT30a & LT30at'!

Prepare a new Cover Back Assembly.

Follow the 4.17 and 4.22 Installation instructions!

Follow the 5.6 Reassembly instructions section 'LT30a & LT30at'!

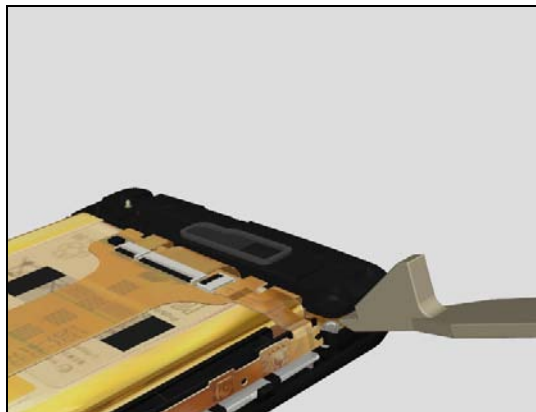


### 4.2 Carrier Lower Frame Assembly

Follow the 3.1 and 3.2 Disassembly instructions!

Prepare a new Carrier Lower Frame Assembly.

Follow the 5.4 and 5.6 Reassembly instructions!

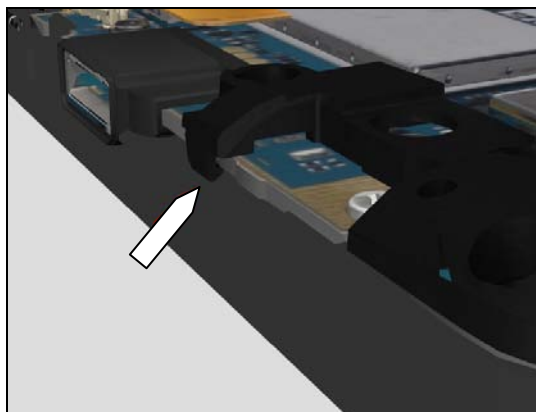


### 4.3 Carrier Upper Frame Assembly

Follow the 3.1 and 3.3 Disassembly instructions!

Prepare a new Carrier Upper Frame Assembly.

Follow the 5.3 and 5.6 Reassembly instructions!



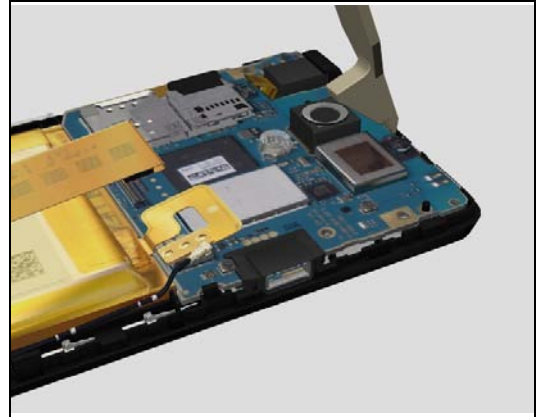
## Replacement

### 4.4 BPA Complete

*Follow the 3.1, 3.3 and 3.4 Disassembly instructions!*

Prepare a new PBA Complete.

Follow the 5.2, 5.3, 5.5 and 5.6 Reassembly instructions!

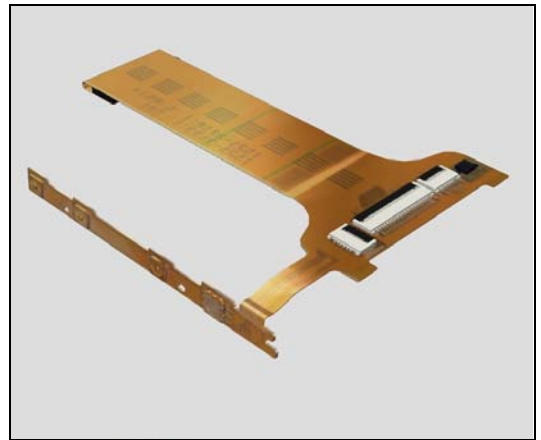


### 4.5 PBA SideKey FPC & Front Cover

*Follow the 3.1 and 3.5 Disassembly instructions!*

Prepare a new PBA SideKey FPC.

Follow the 5.1, 5.5 and 5.6 Reassembly instructions!





## Replacement

### 4.6 Ant. NFC

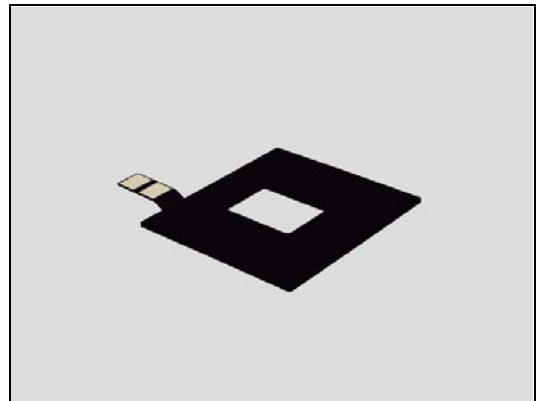
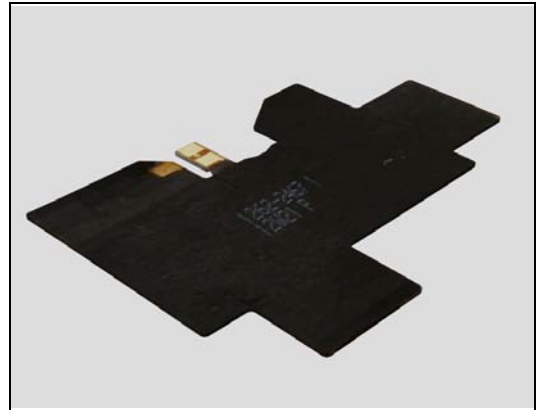
*Follow the 3.1 Disassembly instructions!*

*Carry out the Removal as described below!*

*Prepare a new Ant. NFC.*

*Carry out the Installation as described below!*

*Follow the 5.6 Reassembly instructions!*



#### **REMOVAL**

##### **LT30p**

*Remove the Ant. NFC with a Flex Film Assembly Tool.*

***Scrap the Ant. NFC, not to be reused!***



##### **LT30a & LT30at**

*Remove the Ant. NFC with a Flex Film Assembly Tool.*

***Scrap the Ant. NFC, not to be reused!***



## Replacement

### **INSTALLATION**

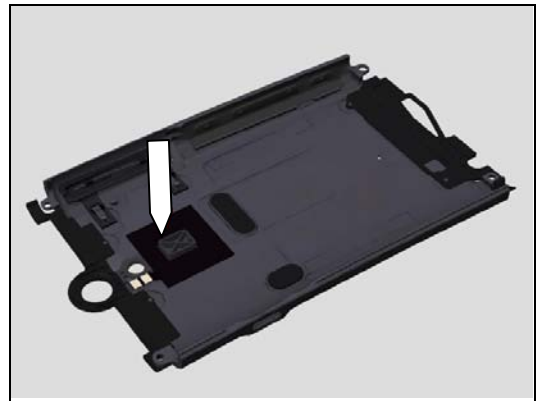
#### **LT30p**

Place the new Ant. NFC in its position on the Back Cover Assembly and press it in place with your fingers.



#### **LT30a & LT30at**

Place the new Ant. NFC in its position on the Back Cover Assembly and press it in place with your fingers.



## Replacement

### 4.7 Battery & Battery Adhesive

*Follow the 3.1, 3.3 and 3.4 Disassembly instructions!*

*Follow the 4.29 and 4.30 Removal instructions!*

*Carry out the Removal as described below!*

*Prepare a new Battery & Battery Adhesive!*

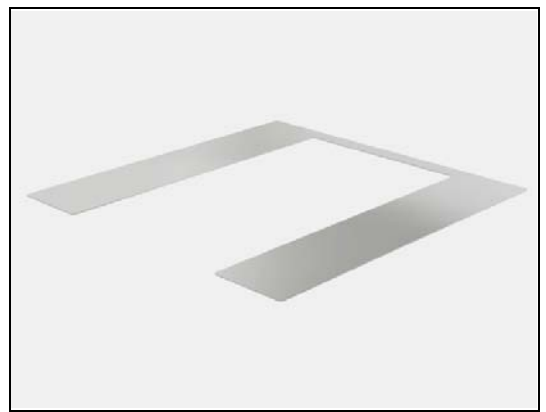
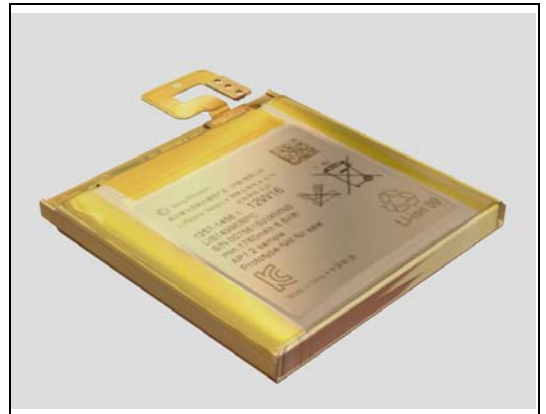
*Carry out the Installation as described below!*

*Follow the 4.30 and 4.29 Installation instructions!*

*Follow the 5.2, 5.3, 5.5 and 5.6 Reassembly instructions!*

**Both Battery and Battery Adhesive must be changed together!**

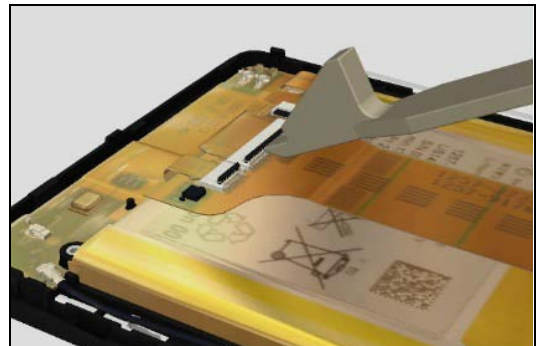
**Scrap the Battery and Battery Adhesive, not to be reused!**



#### REMOVAL

*Unsnap and loosen the PBA SideKey FPC from the PBA Complete to be able to lift the battery*

***Be care full not to damage the PBA SideKey FPC during the Battery exchange!***



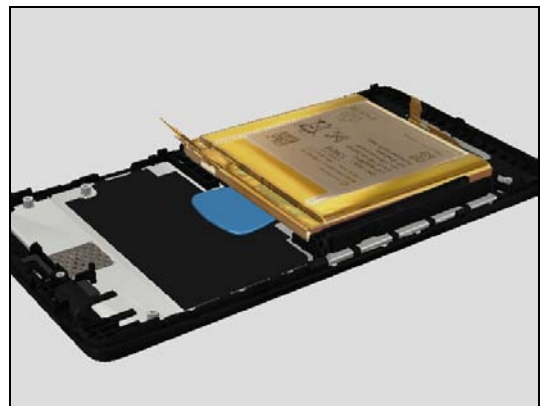
Use a plectrum to gently remove the battery

***Be careful not to puncture the Battery!***

***Scrap the Battery! Not to be reused!***

Peel of the Battery Adhesive and its deposits with your fingers.

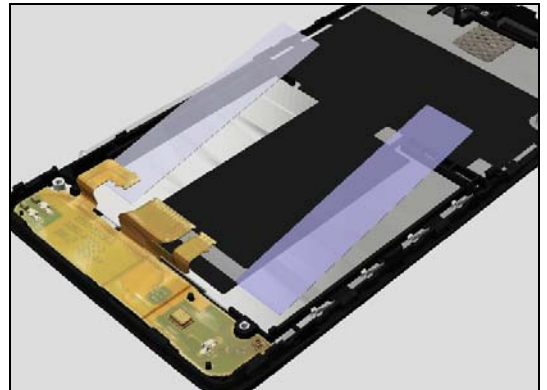
***Scrap the Battery Adhesive, not to be reused!***



## Replacement

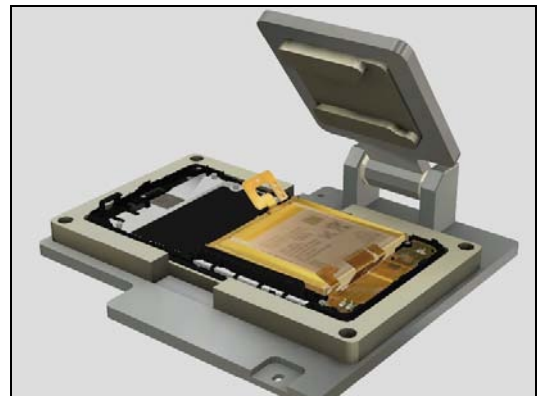
### INSTALLATION

Place the Battery Adhesive with the protection film at its place and apply some pressure with your fingers before removing the protection film.

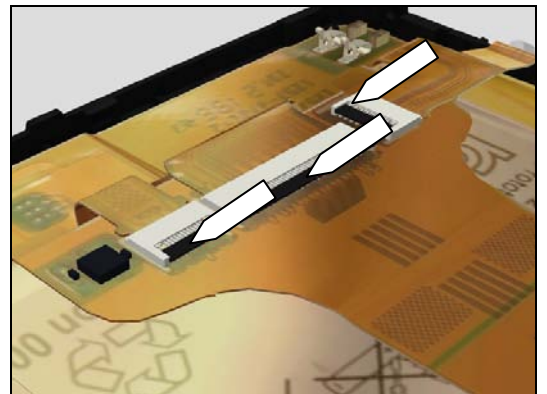


Place the Battery centralised on its position and fixate it with the pressure tool at **100N** in **10s**.

***Make sure that PBA SideKey FPC and PBA Lower FPC are not squashed!***



Connect and then lock the ZIF connections with an Front Opening Tool



## Replacement

### 4.8 Cable Coax

*Follow the 3.1 and 3.2 Disassembly instructions!*

*Carry out the Removal as described below!*

Prepare a new Cable Coax.

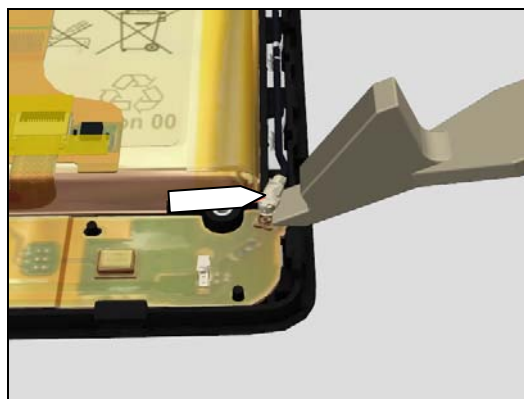
*Carry out the Installation as described below!*

Follow the 5.4 and 5.6 Reassembly instructions!

#### REMOVAL

Loosen the Cable Coax on both sides with a Front Opening Tool.

Gently remove the Cable Coax by pulling it straight out of the holdings.



#### INSTALLATION

Attach the Cable Coax to the PBA Complete and PBA Lower FPC.

***Make sure that the Cable Coax is in place in all snaps!***



## Replacement

### 4.9 Camera 13.1 MPixel CMOS

*Follow the 3.1, 3.3 and 3.4 Disassembly instructions!*

*Carry out the Removal as described below!*

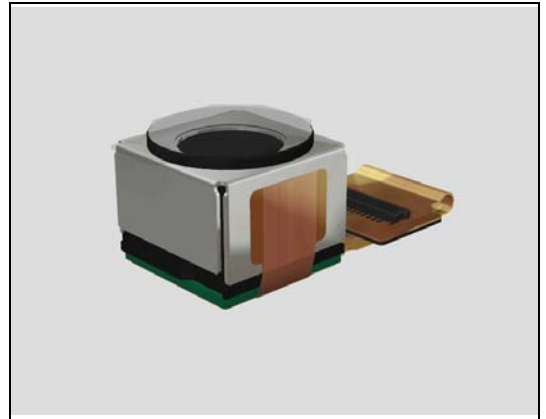
*Carry out 4.21 Removal Instructions!*

Prepare a new Camera 13.1 MPixel CMOS.

*Carry out 4.21 Installation Instructions!*

*Carry out the Installation as described below!*

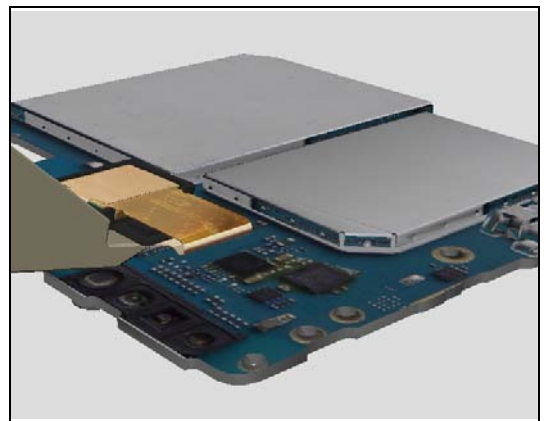
Follow the 5.2, 5.3, 5.5 and 5.6 Reassembly instructions!



#### REMOVAL

Remove the Camera 13.1 MPixel CMOS with a Front Opening Tool.

**Don't touch the camera lens!**

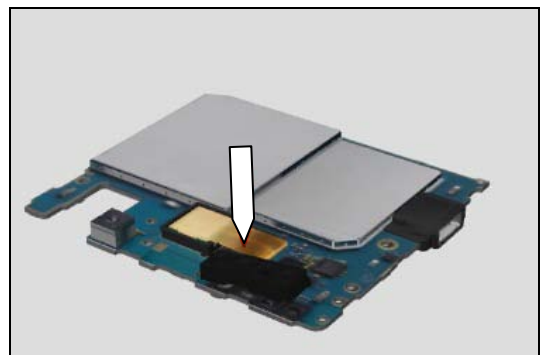


#### INSTALLATION

**Don't touch the camera lens!**

Place the Camera 13.1 MPixel CMOS with the Gasket Camera Grommet, into the hole on the Main BPA.

Connect the Camera 13.1 MPixel CMOS to the PBA Complete and secure the connection by pressing the BtB connectors together with your fingers.



## Replacement

### 4.10 Cap Lower Cap Assembly

Follow the 3.1 Disassembly instructions section '[LT30a](#) & [LT30at](#)' → Cap Lower Cap Assembly!

Prepare a new Cap Lower Cap Assembly.

Follow the 5.6 Reassembly instructions section '[LT30a](#) & [LT30at](#)' → Cap Lower Cap Assembly!



### 4.11 Cap Upper Cap Assembly

Follow the 3.1 Disassembly instructions section '[LT30a](#) & [LT30at](#)' → Cap Upper Cap Assembly!

Prepare a new Cap Lower Cap Assembly.

Follow the 5.6 Reassembly instructions section '[LT30a](#) & [LT30at](#)' → Cap Upper Cap Assembly!





## Replacement

### 4.12 Carrier Label Tray

*Follow the 3.1 Disassembly instructions!*

*Carry out the Removal as described below!*

Prepare a new Carrier Label Tray.

*Carry out the Installation as described below!*

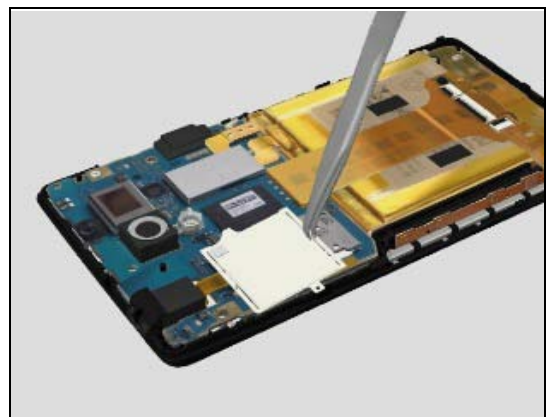
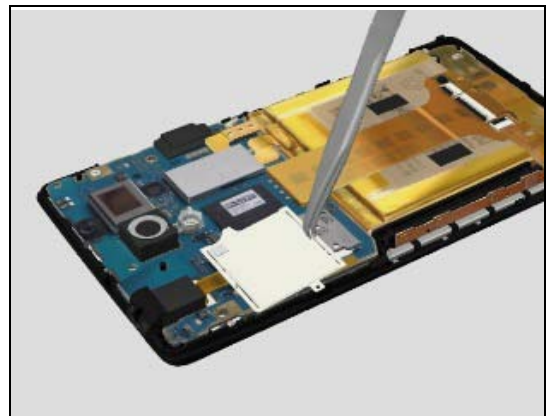
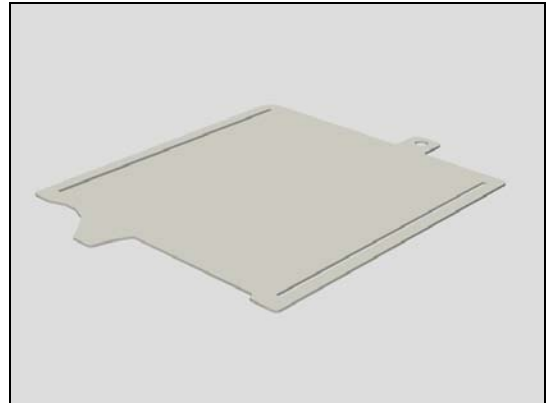
Follow the 5.6 Reassembly instructions!

#### REMOVAL

Use a Flex Film Assembly tool to expand the opening on the Label and then remove it.

#### INSTALLATION

Replace the Carrier Label Tray by expanding the gaps with a Flex Film Assembly tool and put it in place.





## Replacement

### 4.13 Carrier Label Tray Holder Assembly

Follow the 3.1 Disassembly instructions!  
 Follow the 4.12 Removal instructions!  
 Carry out the Removal as described below!  
 Prepare a new Carrier Label Tray Holder Assembly.  
 Carry out the Installation as described below!  
 Follow the 4.12 Installation instructions!  
 Follow the 5.6 Reassembly instructions!

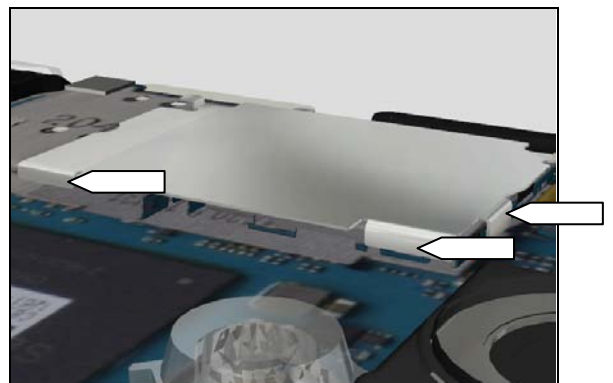
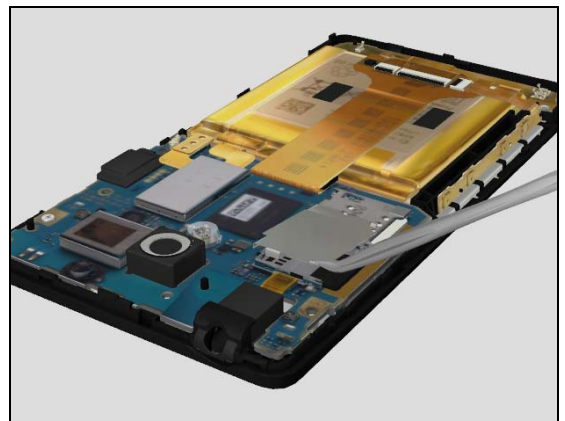
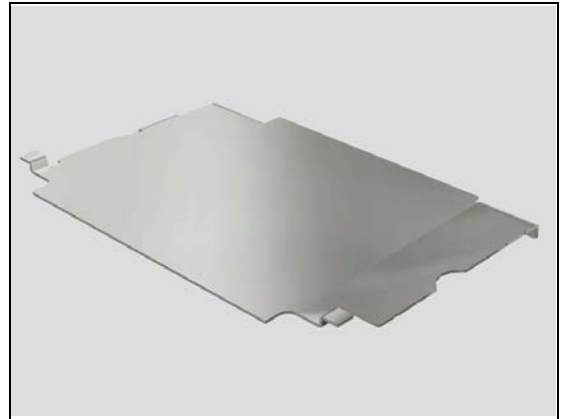
#### REMOVAL

Use a Flex Fillm Assembly Tool to remove the Carrier Label Tray Holder Assembly.

**Scrap the Carrier Label Tray Holder Assembly, not to be reused!**

#### INSTALLATION

Place the Carrier Label Tray Holder Assembly at correct position..



## Replacement

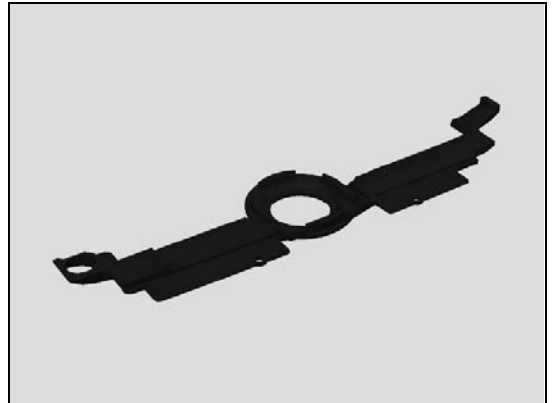
### 4.14 Cover Camera Ring Assembly

*Follow the 3.1 Disassembly instructions!*  
*Carry out the Removal as described below!*  
 Prepare a new Cover Camera Ring Assembly.  
*Carry out the Installation as described below!*  
 Follow the 5.3 and 5.6 Reassembly instructions!

#### REMOVAL

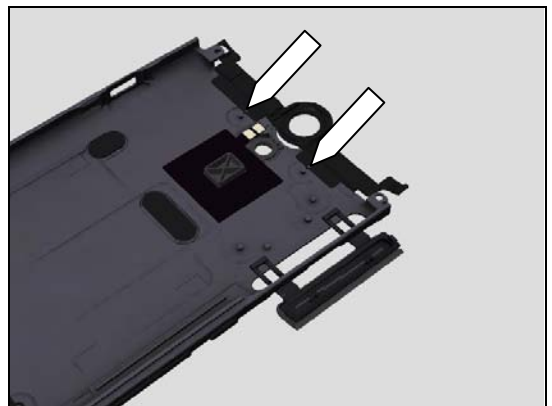
*Peel of the old Cover Camera Ring Assembly!*

**Scrap the Cover Camera Ring Assembly, not to be reused!**



#### INSTALLATION

Place the new Cover Camera Ring Assembly in its position on the Back Cover Assembly guided by the holes and pins and press it in place with your fingers!



### 4.15 Cover SIM/SD Door Assembly

*Follow the 3.1 Disassembly instructions!*  
*Carry out the Removal as described below!*  
 Prepare a new Cover SIM/SD Door Assembly.  
*Carry out the Installation as described below!*  
 Follow the 5.6 Reassembly instructions!

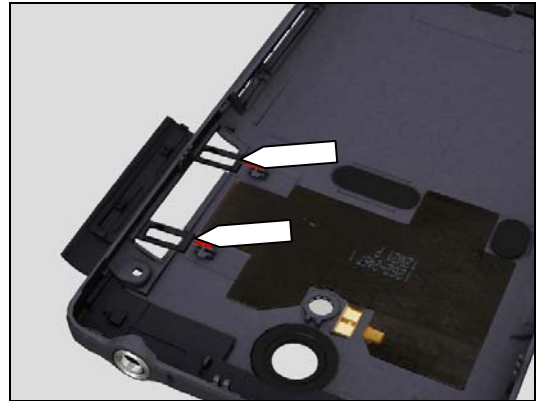


## Replacement

### REMOVAL

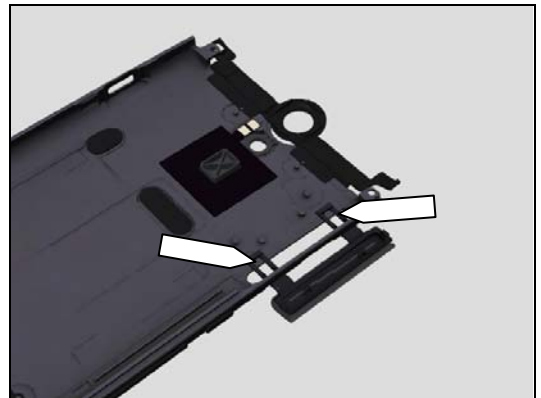
#### LT30p

Remove the old Cover SIM/SD Door Assembly with a Flex Film Assembly Tool by expanding the gaps in the rubber strings on the Cover SIM/SD Door Assembly.



#### LT30a & LT30at

Remove the old Cover SIM/SD Door Assembly with a Flex Film Assembly Tool by expanding the gaps in the rubber strings on the Cover SIM/SD Door Assembly.



### INSTALLATION

#### LT30p

Use a Flex Film Assembly Tool by expanding the gaps in the rubber strings on the Cover SIM/SD Door Assembly to assemble it.



#### LT30a & LT30at

Use a Flex Film Assembly Tool by expanding the gaps in the rubber strings on the Cover SIM/SD Door Assembly to assemble it.



## Replacement

### 4.16 Cushion Earspeaker

*Follow the 3.1, 3.3 and 3.4 Disassembly instructions!*

*Carry out the Removal as described below!*

*Prepare a new Ear Speaker Cushion.*

*Carry out the Installation as described below!*

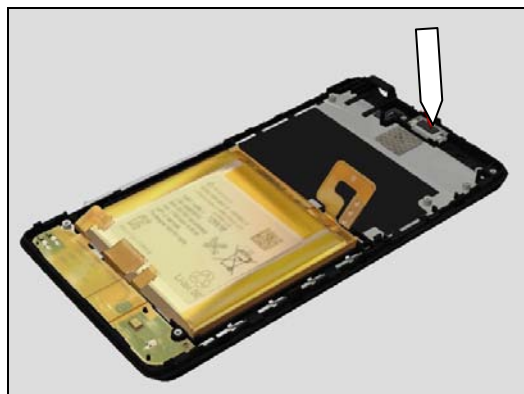
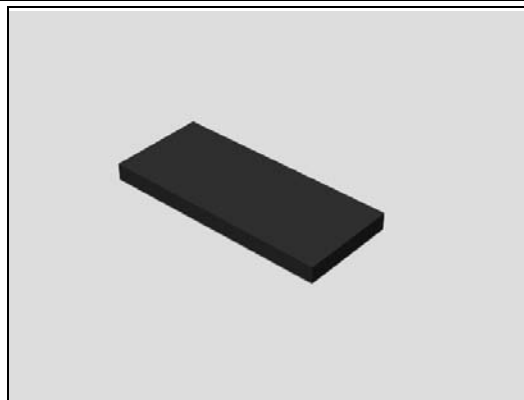
*Follow the 5.2, 5.3, 5.5 and 5.6 Reassembly instructions!*

#### REMOVAL

*Gently peel of the Ear Speaker Cushion with your fingers.*

***Be careful not to damage the Springs on the Ear Speaker!***

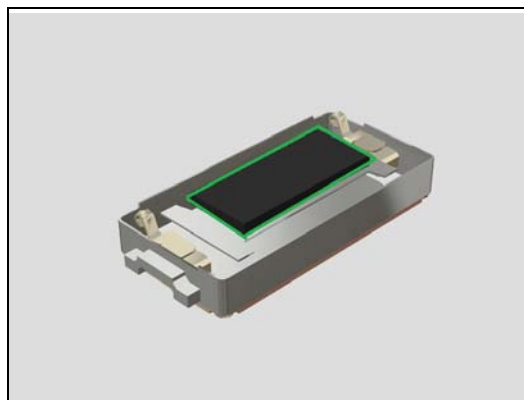
***Scrap the Cushion Earspeaker, not to be reused!***



#### INSTALLATION

***Be careful not to damage the Springs on the Ear Speaker!***

*Place the Cushion Earspeaker at correct position.*



## Replacement

### 4.17 Cushion Flash lens

*Follow the 3.1 and 3.3 Disassembly instructions!*

*Carry out the Removal as described below!*

*Prepare a new Cushion Flash lens.*

*Carry out the Installation as described below!*

*Follow the 5.3 and 5.6 Reassembly instructions!*

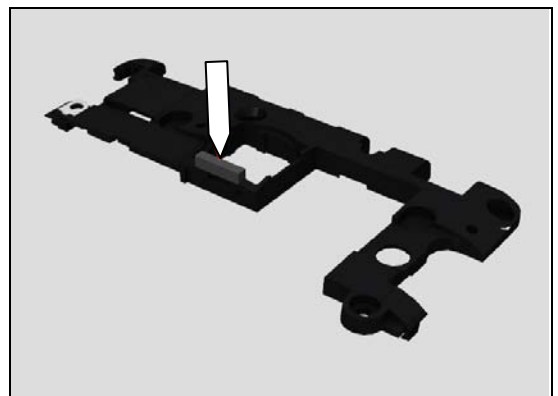
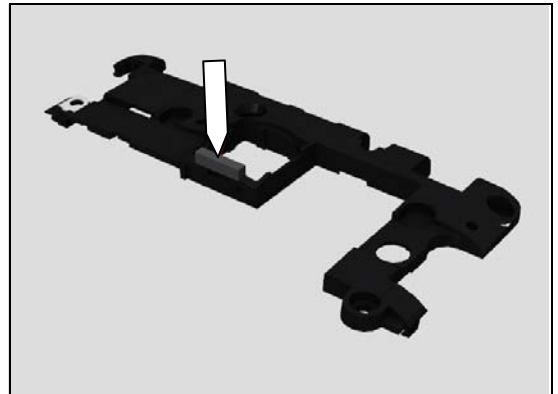
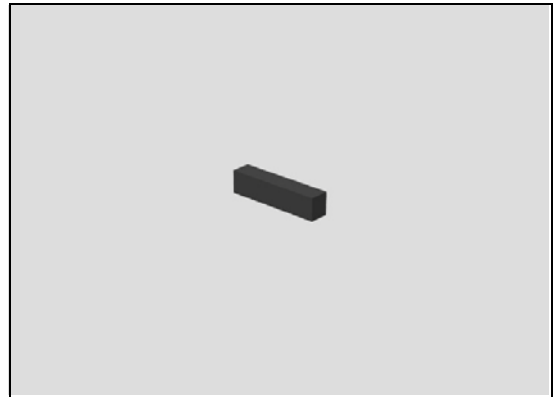
#### REMOVAL

*Gently peel of the Cushion Flash lens.*

**Scrap the Cushion Flash lens, not to be reused!**

#### INSTALLATION

Place the *Cushion Flash lens* at correct position.



## Replacement

### 4.18 Ear Speaker

*Follow the 3.1, 3.3 and 3.4 Disassembly instructions!*

*Carry out the Removal as described below!*

*Prepare a new Ear Speaker.*

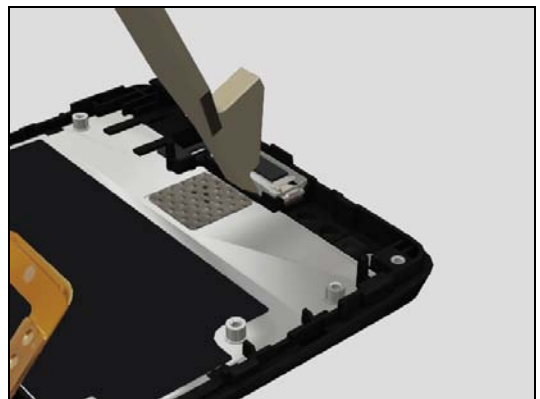
*Follow the 4.16 Installation instructions!*

*Carry out the Installation as described below!*

*Follow the 5.2, 5.3, 5.5 and 5.6 Reassembly instructions!*

#### REMOVAL

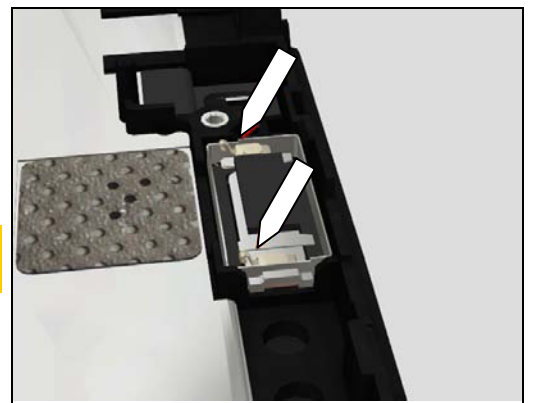
*Remove the Ear Speaker with the Front Opening Tool.*



#### INSTALLATION

Place the Ear Speaker at the correct position.

**Be careful not to damage the Springs on the Ear Speaker!**



## Replacement

### 4.19 Ear Speaker Gasket

*Follow the 3.1, 3.3 and 3.4 Disassembly instructions!*

*Carry out 4.18 Removal instructions!*

*Carry out the Removal as described below!*

Prepare a new Ear Speaker Gasket.

*Carry out 4.18 Installation instructions!*

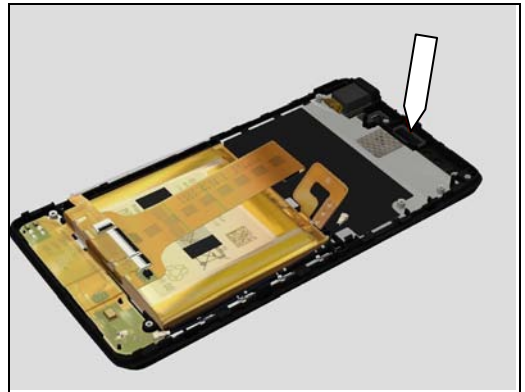
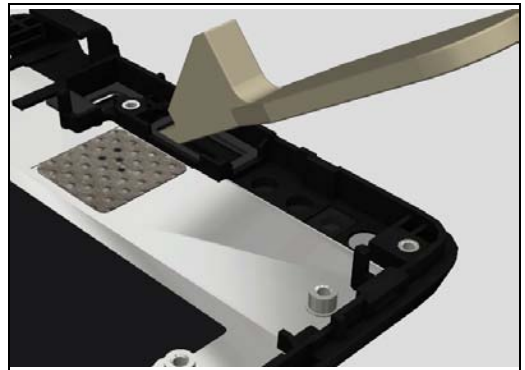
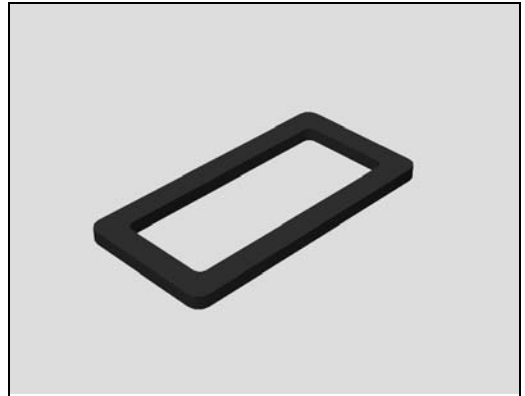
*Carry out the Installation as described below!*

Follow the 5.2, 5.3 and 5.6 Reassembly instructions!

#### REMOVAL

*Remove the Ear Speaker Gasket with the Front Opening Tool.*

**Scrap the Ear Speaker Gasket, not to be reused!**



#### INSTALLATION

Place the Ear Speaker Gasket in the cavity.



## Replacement

### 4.20 Gasket Audio Jack Grommet

*Follow the 3.1, 3.3 and 3.4 Disassembly instructions!*

*Carry out 4.27 Removal Instructions!*

*Carry out the Removal as described below!*

Prepare a new Gasket Audio Jack Grommet.

*Carry out the Installation as described below!*

*Carry out 4.27 Installation Instructions!*

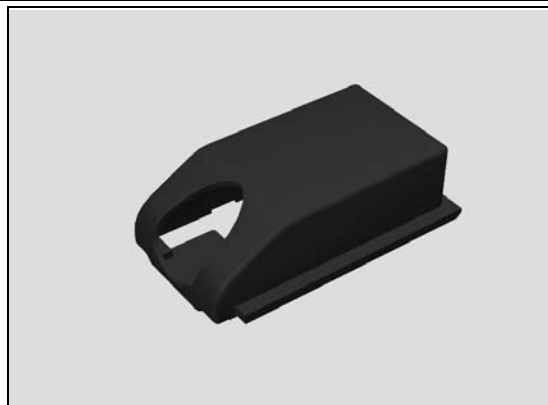
Follow the 5.2, 5.3, 5.5 and 5.6 Reassembly instructions!

#### REMOVAL

*Peel of the Gasket Audio Jack Grommet with your fingers.*

#### INSTALLATION

Place the PBA AVP FPC in the new Gasket Audio Jack Grommet.





## Replacement

### 4.21 Gasket Camera Grommet

*Follow the 3.1, 3.3 and 3.4 Disassembly instructions!*

*Carry out 4.9 Removal instructions!*

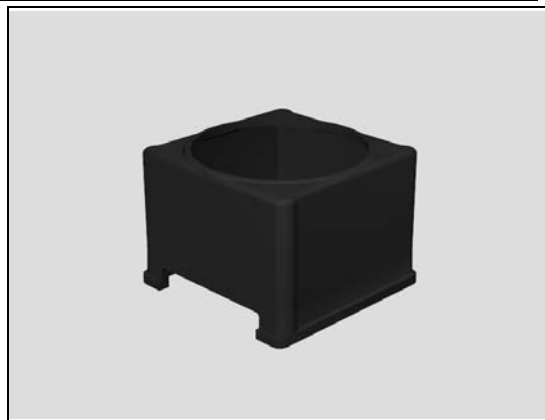
*Carry out the Removal as described below!*

Prepare a new Gasket Camera Grommet.

*Carry out the Installation as described below!*

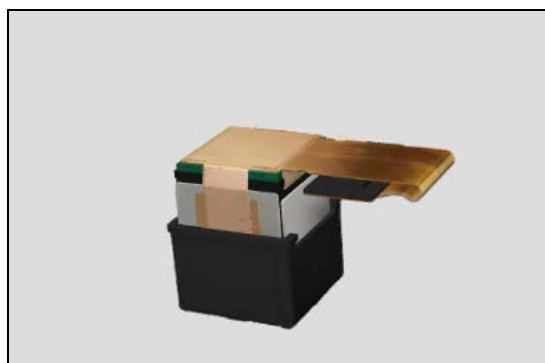
*Carry out 4.9 Installation instructions!*

Follow the 5.2, 5.3, 5.5 and 5.6 Reassembly instructions!



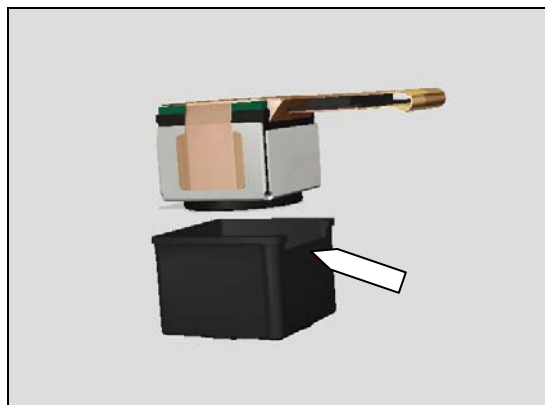
#### REMOVAL

*Gently peel of the Gasket Camera Grommet with your fingers.*



#### INSTALLATION

Place the Camera 13.1 MPixel CMOS in the Gasket Camera Grommet.



## Replacement

### 4.22 Gasket Lower Cap Sealing

*Follow the 3.1 Disassembly instructions!*  
*Carry out the Removal as described below!*  
 Prepare a new Gasket Lower Cap Sealing.  
*Carry out the Installation as described below!*  
 Follow the 5.3 and 5.6 Reassembly instructions!

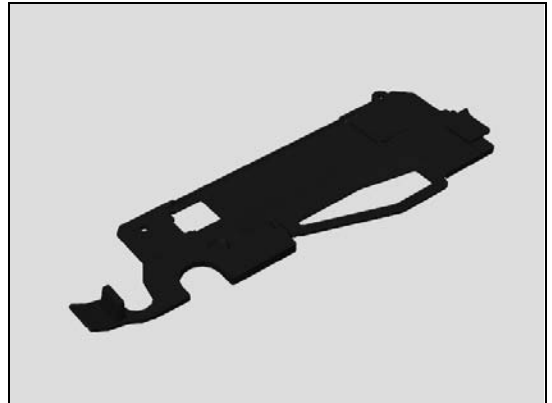
#### REMOVAL

*Peel of the old Gasket Lower Cap Sealing!*

**Scrap the Gasket Lower Cap Sealing, not to be reused!**

#### INSTALLATION

Place the new Gasket Lower Cap Sealing in its position on the Back Cover Assembly and press it in place with your fingers!



## Replacement

### 4.23 Gasket Mic 2 Grommet

*Follow the 3.1 and 3.3 Disassembly instructions!*

*Carry out the Removal as described below!*

Prepare a new Gasket Mic 2 Grommet.

*Carry out the Installation as described below!*

Follow the 5.3 and 5.6 Reassembly instructions!

#### REMOVAL

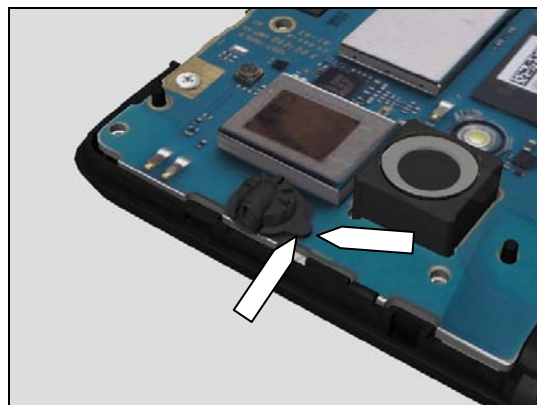
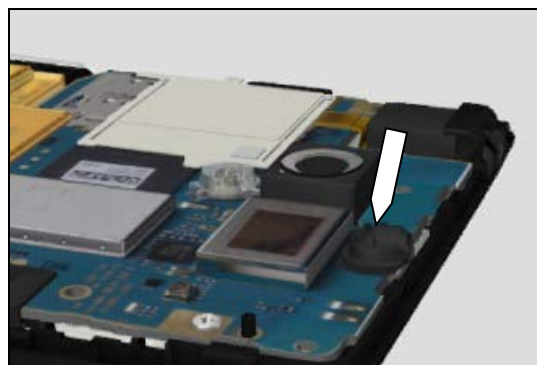
*Peel of the Gasket Mic 2 Grommet.*

**Scrap the Gasket Mic 2 Grommet, not to be reused!**

**Be careful not to damage the components on the PBA!**

#### INSTALLATION

Use the steering pin and hole as guidance and secure it by pressing the Grommet slightly onto the BPA Complete.



## Replacement

### 4.24 Gasket Proxy Grommet PBA Assembly

Follow the 3.1, 3.3 and 3.4 Disassembly instructions!  
 Carry out the Removal as described below!  
 Prepare a new Gasket Proxy Grommet PBA Assembly.  
 Carry out the Installation as described below!  
 Follow the 5.2, 5.3, 5.5 and 5.6 Reassembly instructions!

#### REMOVAL

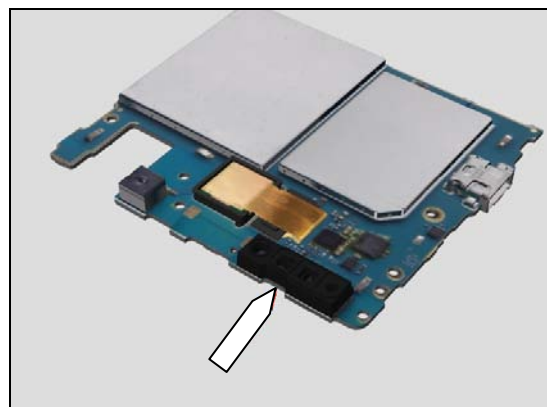
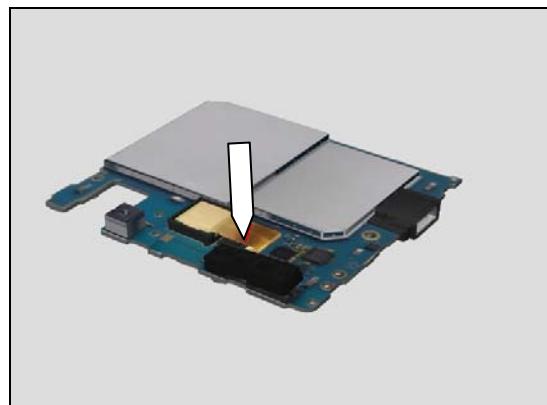
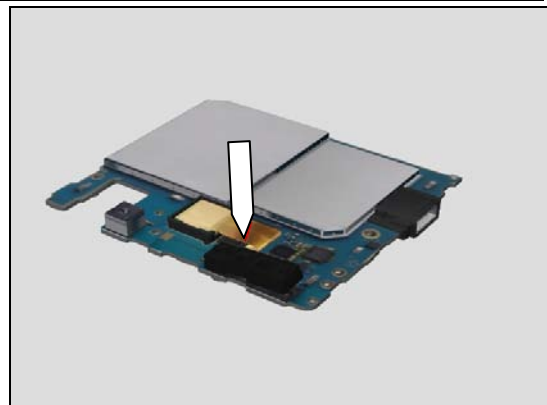
Gently peel of the Gasket Proxy Grommet PBA Assembly with your fingers.

**Scrap the Gasket Proxy Grommet PBA Assembly, not to be reused!**

**Be careful not to damage the components on the PBA!**

#### INSTALLATION

Place it on the PBA at correct position.



## Replacement

### 4.25 Gasket USB Grommet

Follow the 3.1, 3.3 and 3.4 Disassembly instructions!

*Carry out the Removal as described below!*

Prepare a new Gasket USB Grommet.

*Carry out the Installation as described below!*

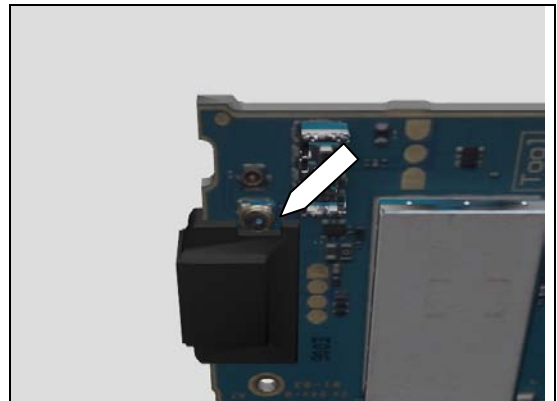
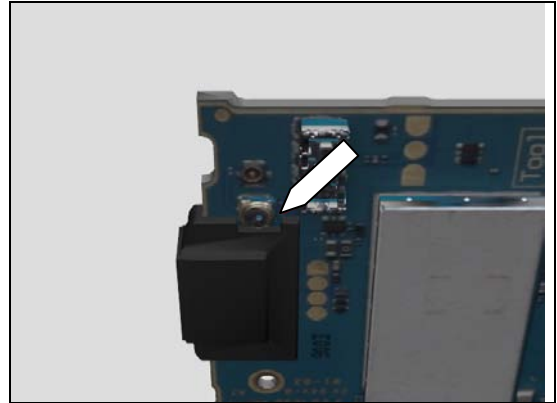
Follow the 5.2, 5.3, 5.5 and 5.6 Reassembly instructions!

#### REMOVAL

Gently peel of the Gasket USB Grommet with your fingers.

#### INSTALLATION

Place it on the PBA at correct position.



## Replacement

### 4.26 Key Multifunc Assembly

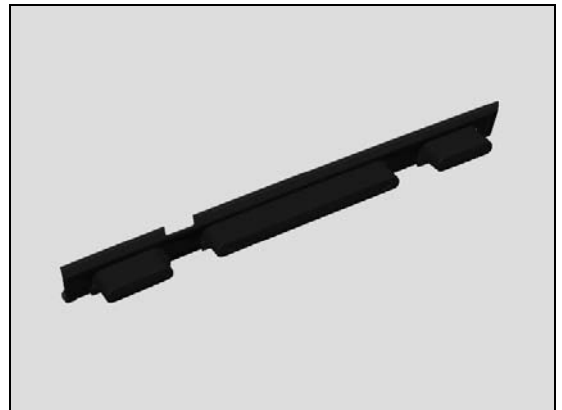
*Follow the 3.1 Disassembly instructions!*

*Carry out the Removal as described below!*

*Prepare a new Key Multifunc Assembly.*

*Carry out the Installation as described below!*

*Follow the 5.6 Reassembly instructions!*



#### **REMOVAL**

##### **LT30p**

Remove the old Key Multifunc Assembly with a Flex Film Assembly Tool.

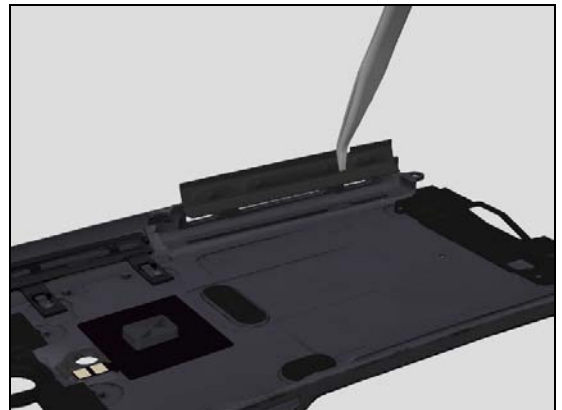
**Scrap the Key Multifunc Assembly, not to be reused!**



##### **LT30a & LT30at**

Remove the old Key Multifunc Assembly with a Flex Film Assembly Tool.

**Scrap the Key Multifunc Assembly, not to be reused!**

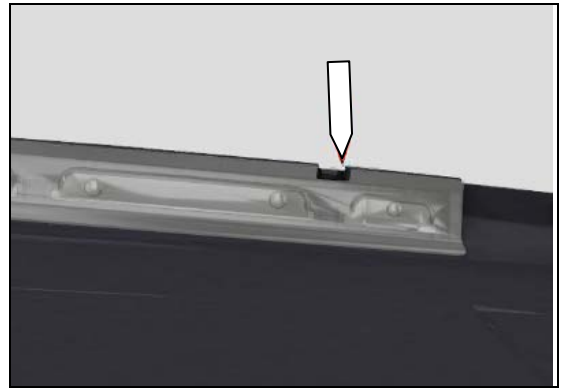


## Replacement

### **INSTALLATION**

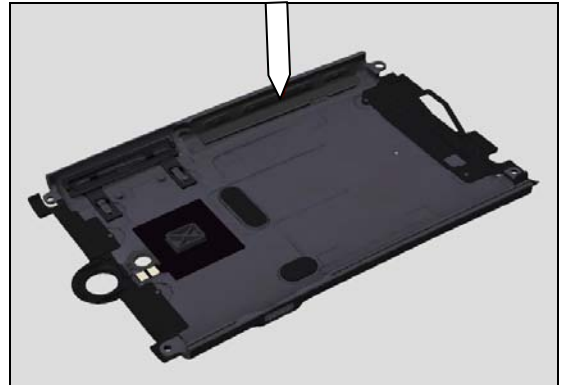
#### **LT30p**

Attach the Key Multifunc Assembly to the Cover Back Assembly with a Flex Film Assembly Tool.  
Press with your fingers to secure its position.



#### **LT30a & LT30at**

Attach the Key Multifunc Assembly to the Cover Back Assembly with a Flex Film Assembly Tool.  
Press with your fingers to secure its position.



## Replacement

### 4.27 PBA AVP FPC

*Follow the 3.1, 3.3 and 3.4 Disassembly instructions!*

*Carry out the Removal as described below!*

*Carry out 4.20 Removal Instructions!*

Prepare a new PBA AVP FPC.

*Carry out 4.20 Installation Instructions!*

*Carry out the Installation as described below!*

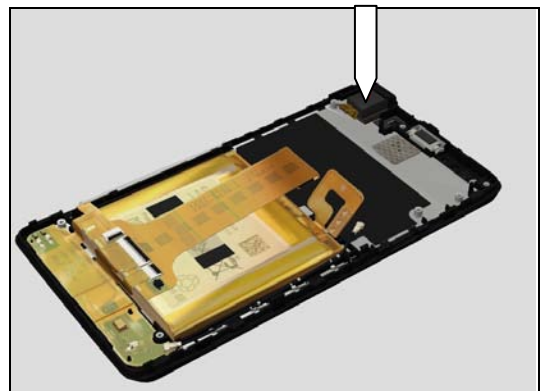
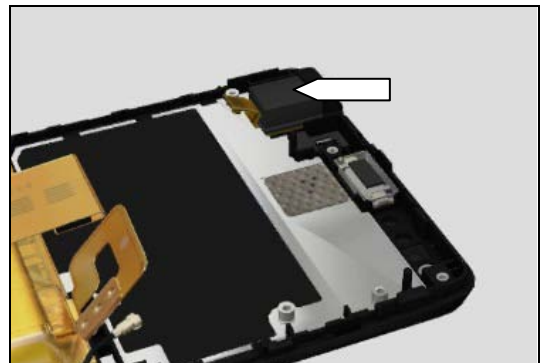
Follow the 5.2, 5.3, 5.5 and 5.6 Reassembly instructions!

#### REMOVAL

Remove the PBA AVP FPC with your fingers from the Main BPA.

#### INSTALLATION

Place the Assembly in the cavity on the Front Cover.





## Replacement

### 4.28 PBA Lower FPC

*Follow the 3.1 and 3.2 Disassembly instructions!*

*Carry out the Removal as described below!*

*Prepare a new PBA Lower FPC.*

*Carry out the Installation as described below!*

*Follow the 5.4 and 5.6 Reassembly instructions!*

#### REMOVAL

Gently remove the Key FPC ZIF tape by using a Flex Film Assembly Tool.

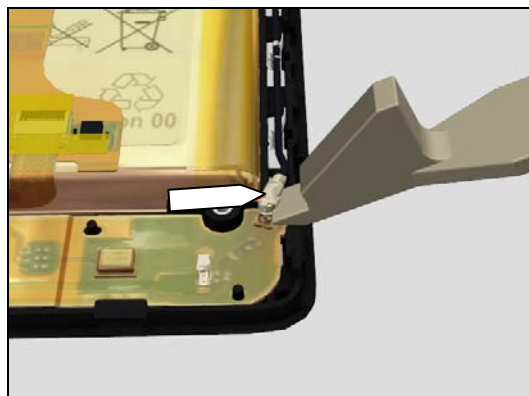
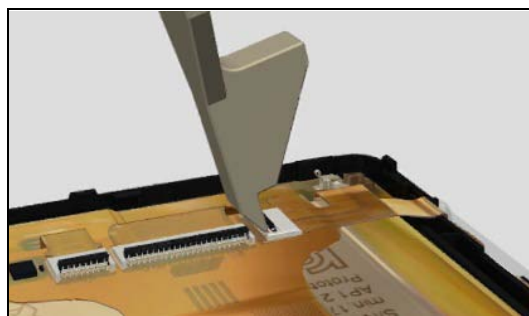
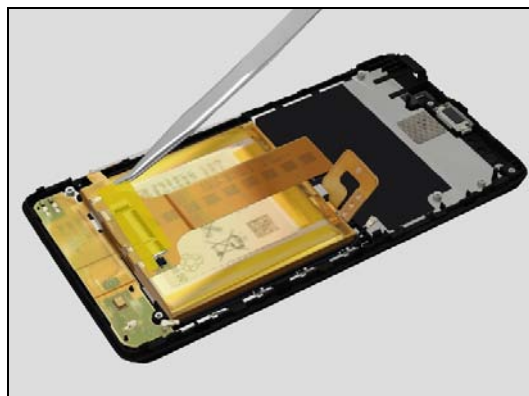
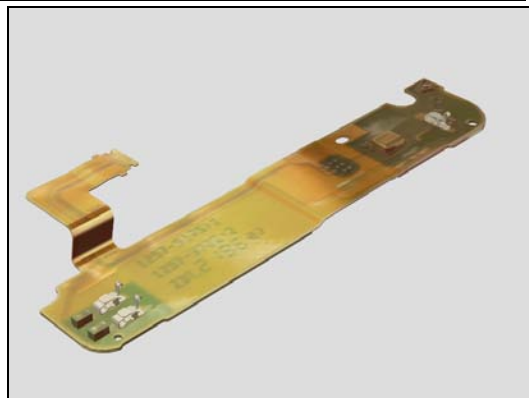
**Scrap the Key FPC ZIF tape, not to be reused!**

Open the ZIF connector attached to the PBA SideKey FPC with a Front Opening Tool and use a Flex Film Assembly Tool to separate it.

Loosen the Cable Coax from the PBA Lower FPC with a Front Opening Tool.

Gently peel of the PBA Lower FPC.

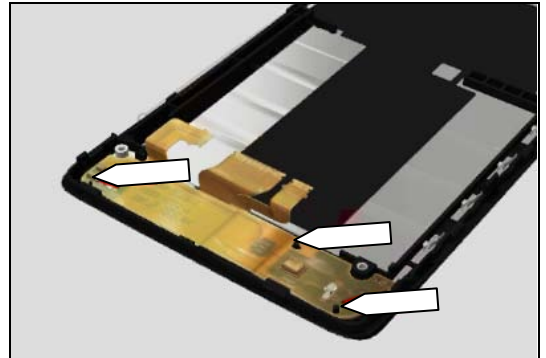
**Scrap the PBA Lower FPC, not to be reused!**



## Replacement

### INSTALLATION

Assemble the PBA Lower FPC guided by the pins and holes.

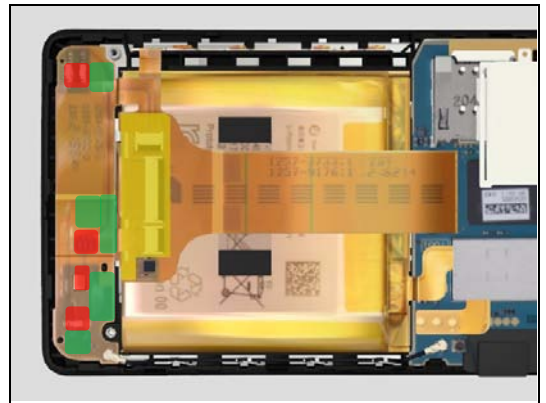


Use the big end of the Nylon Pointer to press on the areas marked in green.

**Putting pressure on the green areas is very important.**

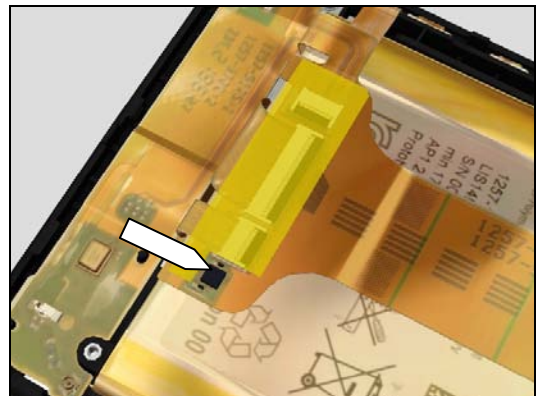
**Don't touch the components, areas marked in red!**

Connect the ZIF connector from the PBA Lower FPC to the PBA SideKey FPC.



Assemble the new Side key FPC ZIF tape without covering the components on the PBA SideKey FPC as shown in the picture.

Secure its position with your fingers.



Attach the Cable Coax to the PBA Lower FPC.

**Make sure that the Cable Coax is in place in all snaps!**



## Replacement

### 4.29 Side Key FPC tape

*Follow the 3.1 Disassembly instructions!*

*Carry out the Removal as described below!*

*Prepare a new Side Key FPC tape.*

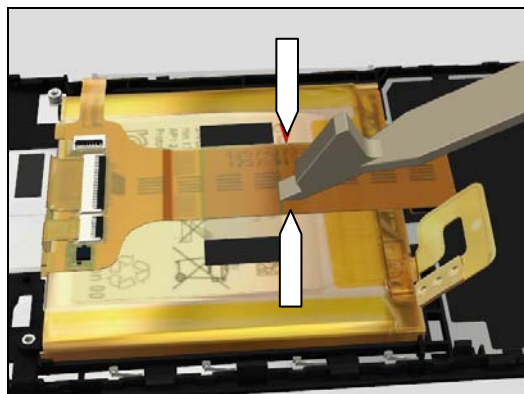
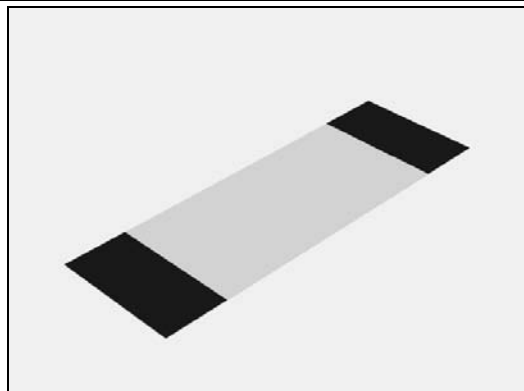
*Carry out the Installation as described below!*

*Follow the 5.6 Reassembly instructions!*

#### REMOVAL

*Use a Front Opening Tool to remove the Side Key FPC tape.*

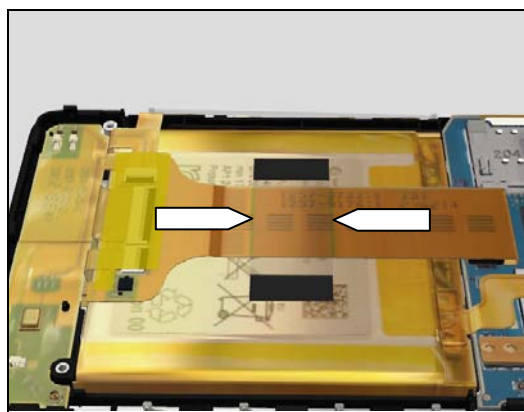
**Scrap the Side Key FPC tape, not to be reused!**



#### INSTALLATION

Assemble the Side Key FPC tape between the lines on the PBA SideKey FPC.

Secure its position with your fingers



## Replacement

### 4.30 Side Key FPC ZIF tape

*Follow the 3.1 Disassembly instructions!*  
*Carry out the Removal as described below!*  
 Prepare a new Side Key FPC ZIF tape.  
*Carry out the Installation as described below!*  
 Follow the 5.6 Reassembly instructions!

#### REMOVAL

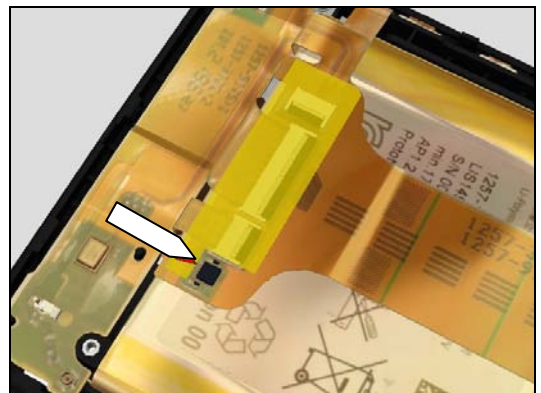
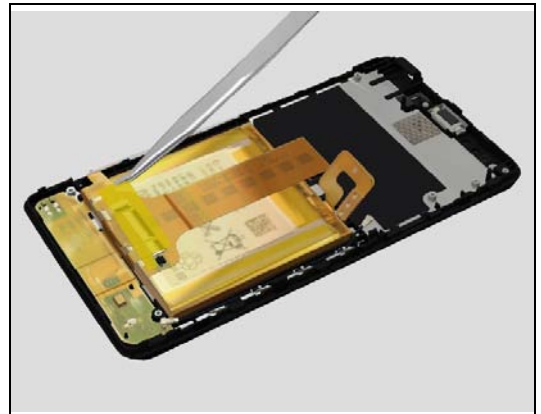
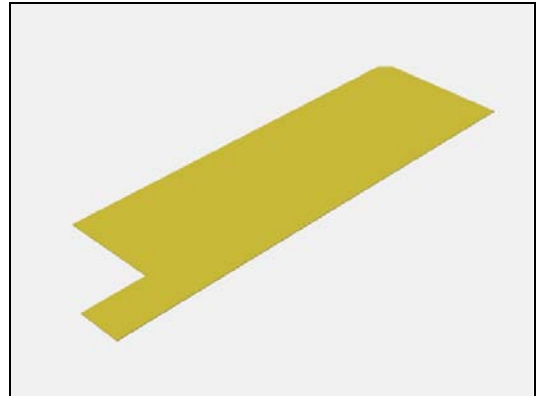
*Remove the old Side key FPC ZIF tape with a Flex Film Assembly tool.*

**Scrap the Side Key FPC ZIF tape, not to be reused!**

#### INSTALLATION

Assemble the new Side key FPC ZIF tape without covering the components on the PBA SideKey FPC as shown in the picture.

Secure its position with your fingers.



## Replacement

### 4.31 Water Indicator

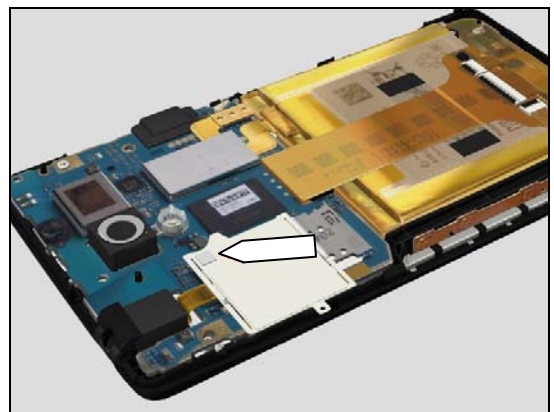
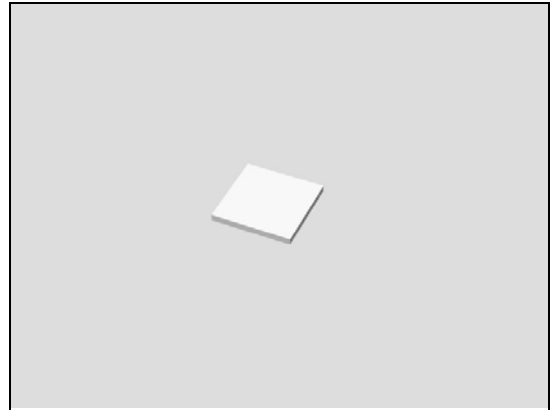
*Follow the 3.1 Disassembly instructions!*  
*Carry out the Removal as described below!*  
 Prepare a new Water Indicator.  
*Carry out the Installation as described below!*  
 Follow the 5.6 Reassembly instructions!

#### REMOVAL

*Peel of the Water Indicator.*

#### INSTALLATION

Place the new Water Indicator at inner left side of the Carrier Label Tray.

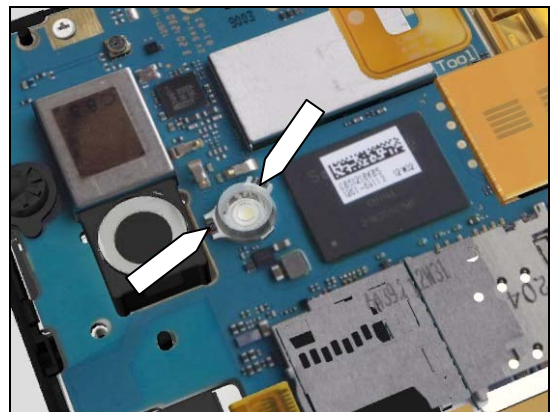


### 4.32 Window Camera Flash Inner Lens

*Follow the 3.1 and 3.2 Disassembly instructions!*

**Window Camera Flash Inner Lens is not possible to remove!**

Prepare a new Window Camera Flash Inner Lens.  
 Place the new Window Camera Flash Inner Lens on the PBA Complete guided by the shape of part and components.  
 Follow the 5.6 Reassembly instructions!





## Replacement

### 4.33 Board Swap - Replacement

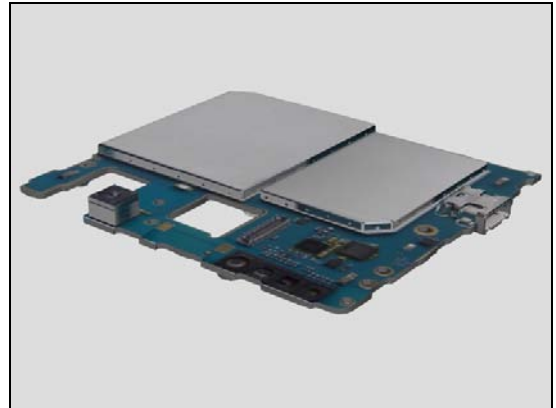
*Follow the 3.1, 3.3 and 3.4 Disassembly instructions!*

*Carry out 4.9, 4.12 and 4.25 Removal instructions!*

**Re-use the Camera 13.1 MPixel CMOS , Gasket Camera Grommet, Gasket USB Grommet and the Carrier Label Tray!**

Replace the Swap Board.

*Carry out 4.9, 4.12, 4.13, 4.23-4.25 and 4.32 Installation instructions!*



*Follow the 5.2, 5.3, 5.5 and 5.6 Reassembly instructions!*

Press the Key On/Off to power on the phone, place unit on flat desk and wait 4 minutes until system boot up has been completed.

**Please DO NOT move the phone during starting up until "Select Language" menu is shown on the display!**

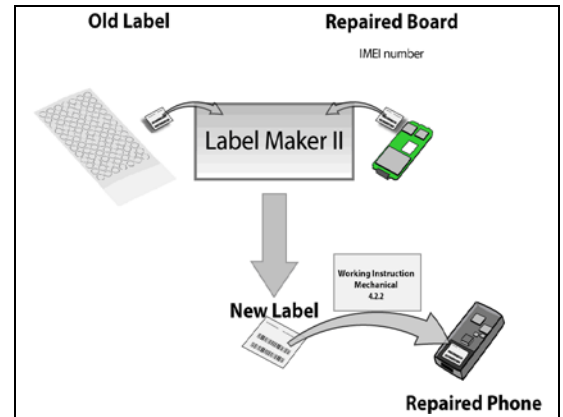
*After "Select Language" menu, turn off the phone.*

## Replacement

### 4.34 Board Swap – Change Label

#### CHANGE LABEL

Follow the instructions in the Generic Repair Manual –  
Build swap for change of label.



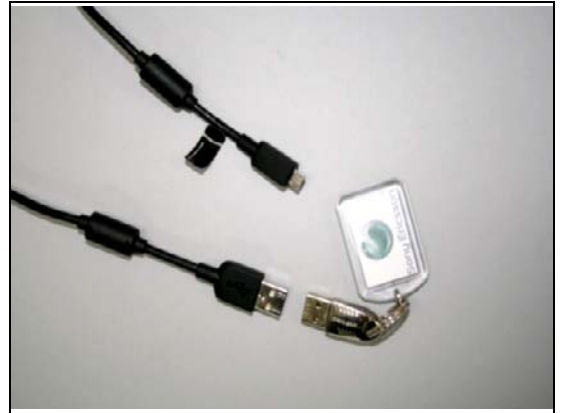


## Replacement

### 4.35 Board Swap – Customize of Software

#### CUSTOMIZE OF SOFTWARE

*Follow the instructions in the Generic Repair Manual –  
Build swap for customization of the software.*

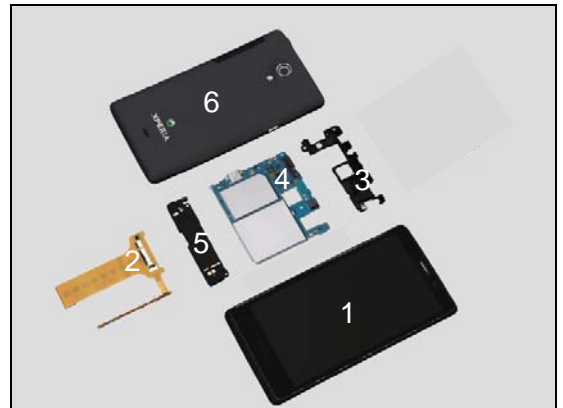


## 5 Re-Assembly

### LT30p

The Re-Assembly is done in the following order:

1. Front Cover
2. PBA SideKey FPC
3. PBA Complete
4. Carrier Upper Frame Assembly
5. Carrier Lower Frame Assembly
6. Cover Back Assembly



### LT30a & LT30at

The Disassembly is done to the following modules:

1. Front Cover
2. PBA SideKey FPC
3. PBA Complete
4. Carrier Upper Frame Assembly
5. Carrier Lower Frame Assembly
6. Cover Back Assembly
7. Cap Lower Cap Assembly
8. Cap Upper Cap Assembly



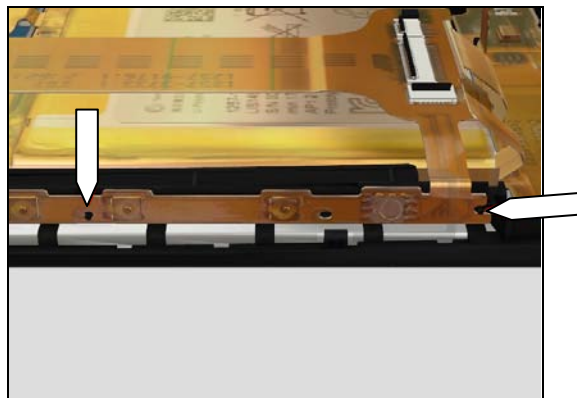
## Re-Assembly

### 5.1 PBA SideKey FPC & Front Cover

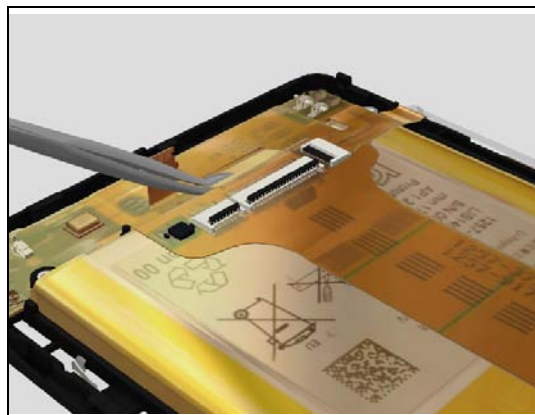
Prepare a new PBA SideKey FPC

Securely place the FPC on its proper position as indicated by the pegs and holes.

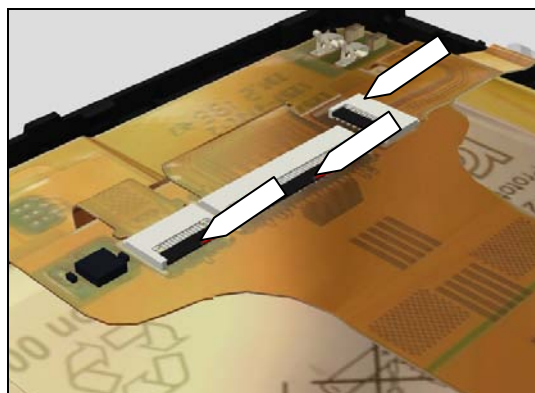
Press to secure its position.



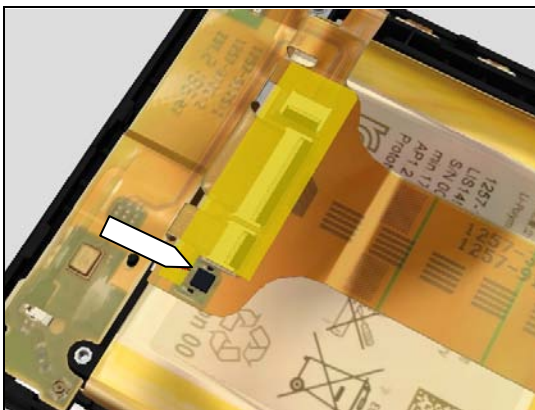
Use a Flex Assembly Tool to securely attach the 3 ZIF connections from the Front Assembly and the PBA Lower FPC.



Lock the ZIF connections with an Front Opening Tool

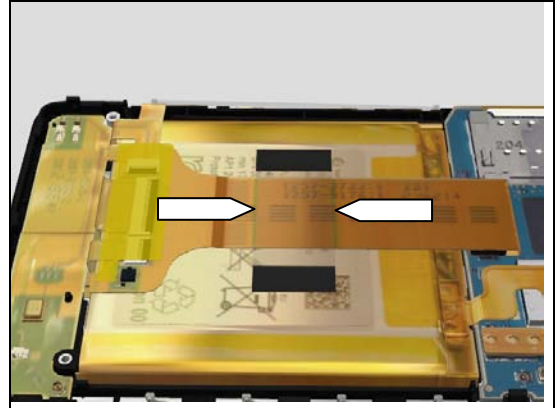


Gently apply the Key FPC ZIF tape by using a Flex Film Assembly Tool, not covering the components.



## Re-Assembly

Assemble the Side Key FPC tape between the lines on the PBA SideKey FPC.  
Secure its position with your fingers



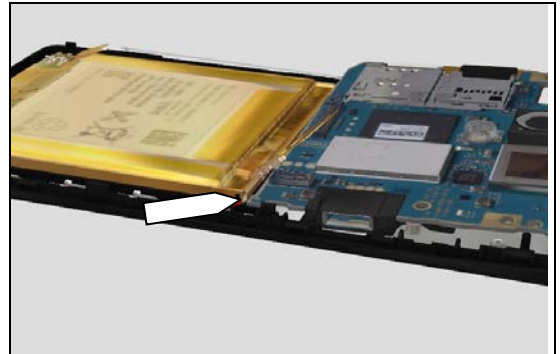
## Re-Assembly

### 5.2 BPA Complete

Prepare the BPA Complete.

Secure that the flex from the battery is not damaged and securely place the corner of the PBA Complete into its position.

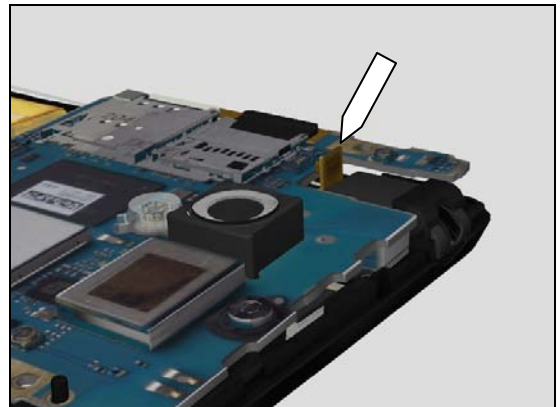
Lower the other corner guided by the steering pin on the frame of the front.



Hold the Flex on the PBA AVP FPC in place while putting the opposite side of the BPA Complete into its position.



Hold the Flex on the PBA AVP FPC in place while putting the opposite side of the BPA Complete into its position.



Press the main PBA to snap the hooks as shown and secure it by a new M1.4X3.0 screw.

Use Bits (JCIS No 0 → 14 ± 2 Ncm torque).

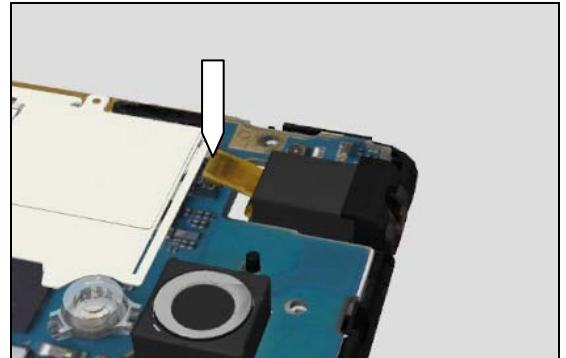
**Do not touch the lens of the Camera 13.1 MPixel CMOS !**

Securely snap the BtB connector from the PBA AVP FPC on to the BPA Complete.

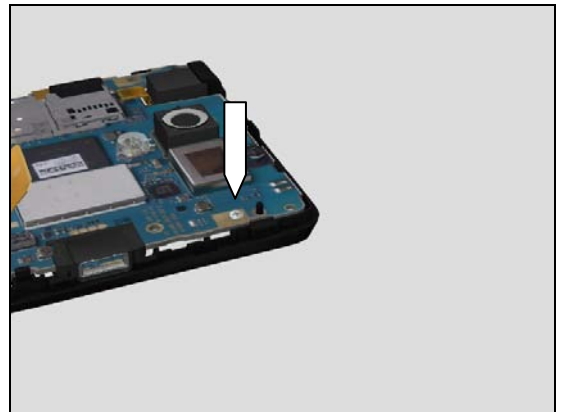


## Re-Assembly

Attach the BtB connector from the PBA AVP FPC to PBA Complete.



Take a new M1.4X3.0 screw and secure the PBA complete.  
Use Bits (JCIS No 0 →  $14 \pm 2$  Ncm torque).

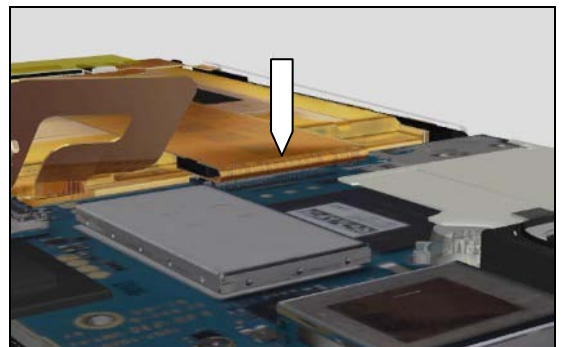


Attach the Cable Coax to the PBA.

**Make sure that the Cable Coax is in place in all snaps!**



Attach the BtB connector from the PBA SideKey FPC to PBA Complete.



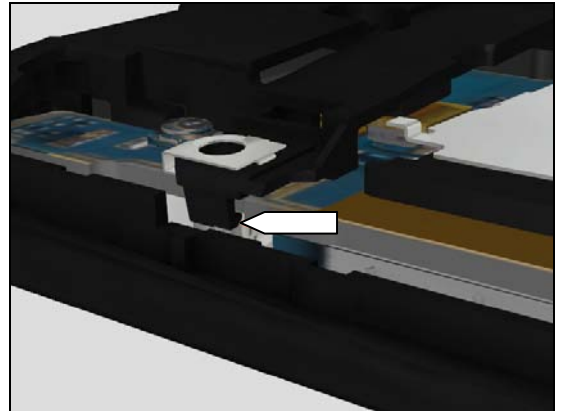


## Re-Assembly

### 5.3 Carrier Upper Frame Assembly

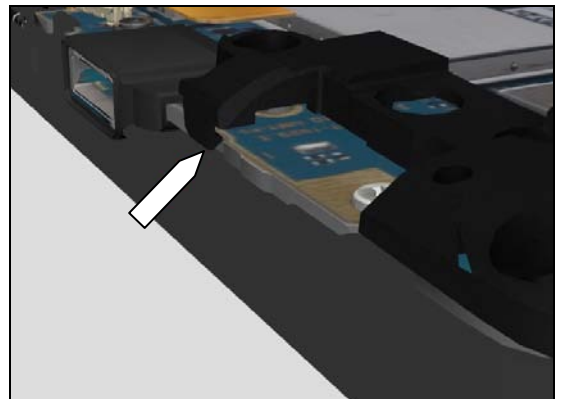
Prepare a Carrier Upper Frame Assembly.  
Start snapping the hook at the metal armoured hole.

**Be careful not to damage the springs on the BPA  
Complete and don't touch the camera!**

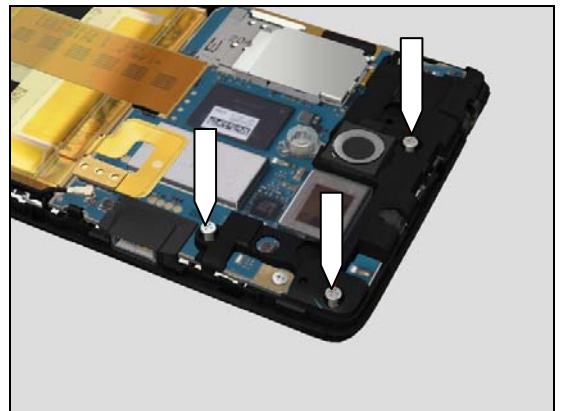


Lower the component and snap the opposite hook.

**Be careful not to damage the springs on the BPA  
Complete and don't touch the camera!**



Secure the position with new M1.4X4.0 screws.  
Use Bits (JCIS No 0 → 14 ± 2 Ncm torque).





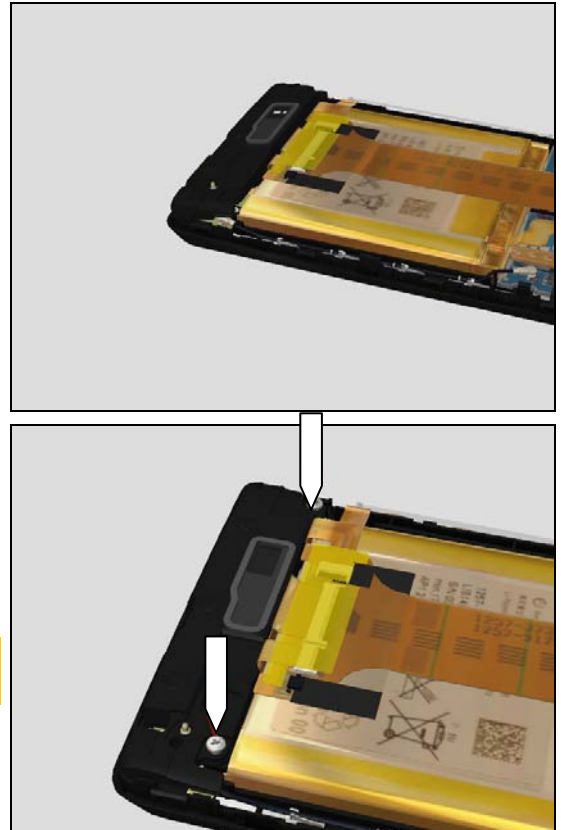
## Re-Assembly

### 5.4 Carrier Lower Frame Assembly

Prepare a Carrier Lower Frame Assembly.  
Start placing the bottom side into the Frame

Secure its position by hand and by new M1.4X3.0 screws.  
Use Bits (JCIS No 0 →  $14 \pm 2$  Ncm torque).

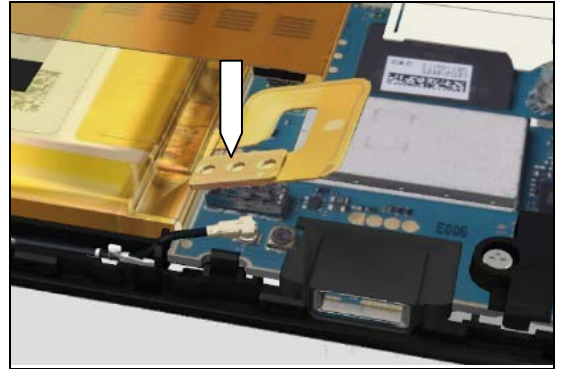
**Be careful not to damage the springs on the BPA Lower FPC!**



## Re-Assembly

### 5.5 Connect Battery

Connect the BtB from the Battery to BtB PBA Complete.



## Re-Assembly

### 5.6 Cover Back Assembly

#### LT30p

Prepare a Cover Back Assembly.

Start snapping the hook at the top of the unit.



Continue along the sides of the unit downwards, press on both sides at the same time.



Do the same things until you reach the bottom of the unit.

**Be sure that all the hooks have snapped and that it looks fine at the Audio plug!**



Secure the Cover Back Assembly with a new M1.4X4.0 screw.  
Use Bits (JCIS No 0 → 12 ± 2 Ncm torque).



## Re-Assembly

### LT30a & LT30at

Start matching the hole to the micro USB and then snap the other side.



Secure the Cover Back Assembly with 3 new Screw Len:4.0  
Diam:1.4 screws.

Use Bits (JCIS No 0 →  $14 \pm 2$  Ncm torque).



The screw at the Key Multifunc Assembly shall be secured with the MComp Screw Bushing and a new Other Len:4.5  
Diam:1.4 screw.

Use Bits (JCIS No 0 →  $10 \pm 2$  Ncm torque).



### Cap Upper Cap Assembly

Start pressing the joint between the Cover Back Assembly and the Cap Upper Cap Assembly together and while doing that, snap it together to the Front Assembly.

**Be sure that all the hooks have snapped!**



## Re-Assembly

### Cap Lower Cap Assembly

Start pressing the joint between the Cover Back Assembly and the Cap Lower Cap Assembly together and while doing that, snap it together to the Front Assembly.

***Be sure that all the hooks have snapped!***



## 6 Revision History

Rev.	Date	Changes / Comments
1	2012-Sep-14	First Release
2	2012-Sep-24	Adapted to other Work Instructions on CSPN
3	2012-Okt-31	LT30a & LT30at added